

# Collecting fuel consumption data

Exploring how to obtain accurate fuel consumption data using cost effective and easy to install onboard wireless connectivity solutions, will help owners achieve regulatory compliance in 2023 and beyond.

Bergen 2022 Nov 10th // Trond Liabø



# Our Organisation

- Established 2015, in Norway
- Singapore, Germany, UK
- 30+ employees

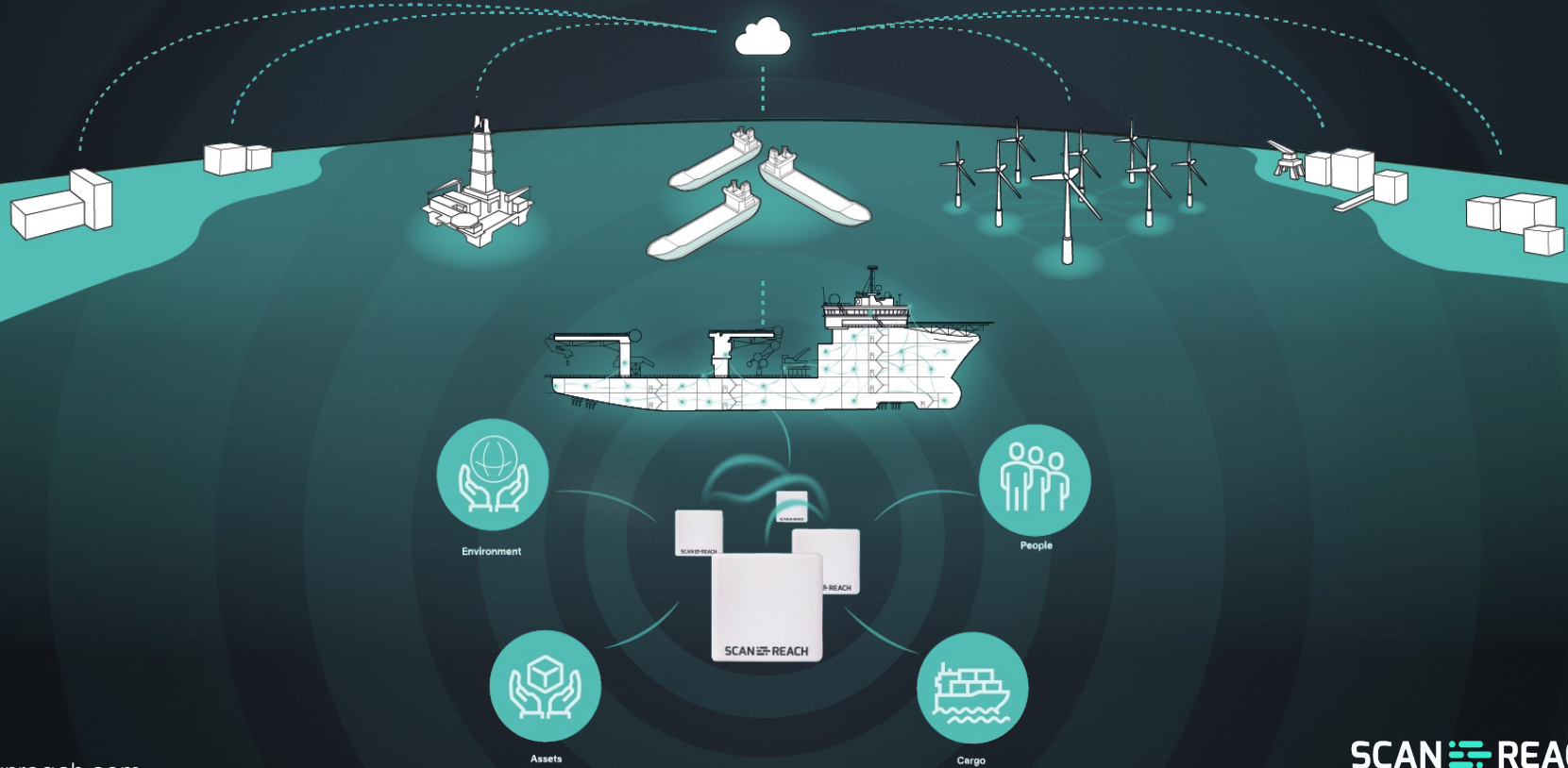
# Values

BRAVE, HONEST, CARING

- We dare to challenge
- Trustworthy and fair
- Respect, trust, tolerance and openness



# We are the Internet of Things at Sea



# The world you operate in?



SEA CARGO  
CHARTER



POSEIDON  
PRINCIPLES

# Ships of 5,000 gross tonnage and above are required to collect consumption data

- Many vessels (circa 60% of the commercial fleet) have no connected fuel flow meters.
- Manual readings may provide data on the ship, but not automated reporting to shore.

# Fuel Consumption

Better data = Better decision making



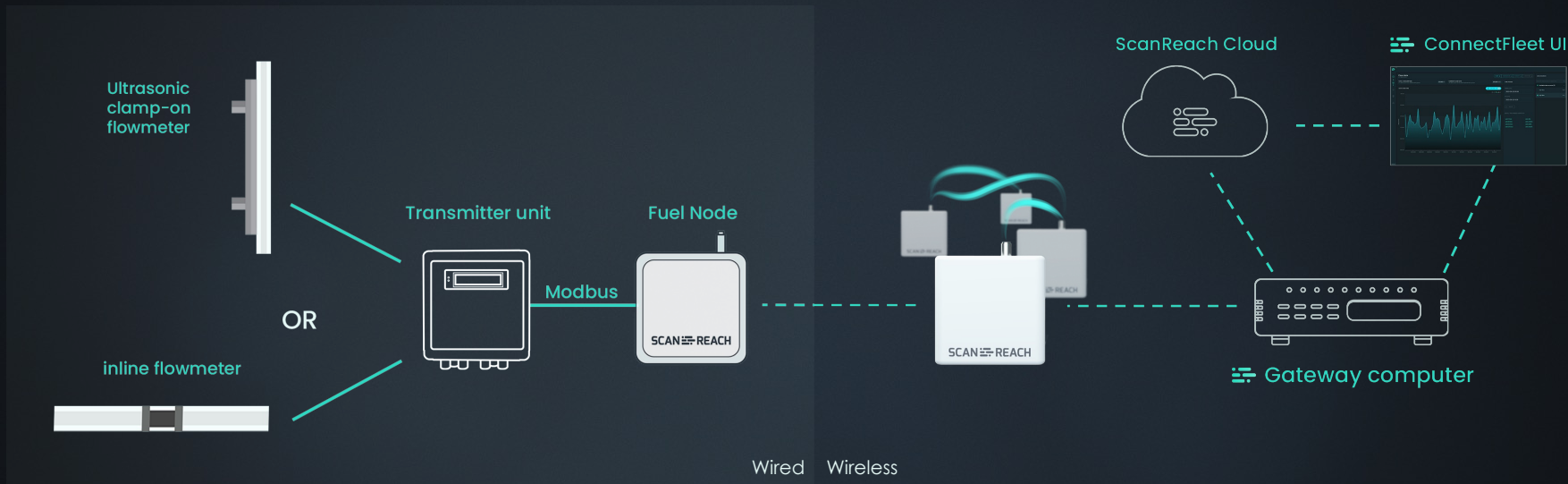
- Understanding accurate fuel consumption
- Reduce fuel cost



- Vessel regulatory compliance and CII rating
- Better hire rates from charterers

The logo icon consists of three horizontal teal bars of varying lengths, with a small teal dot at the end of each bar, arranged in a staggered pattern.

**ConnectFuel**



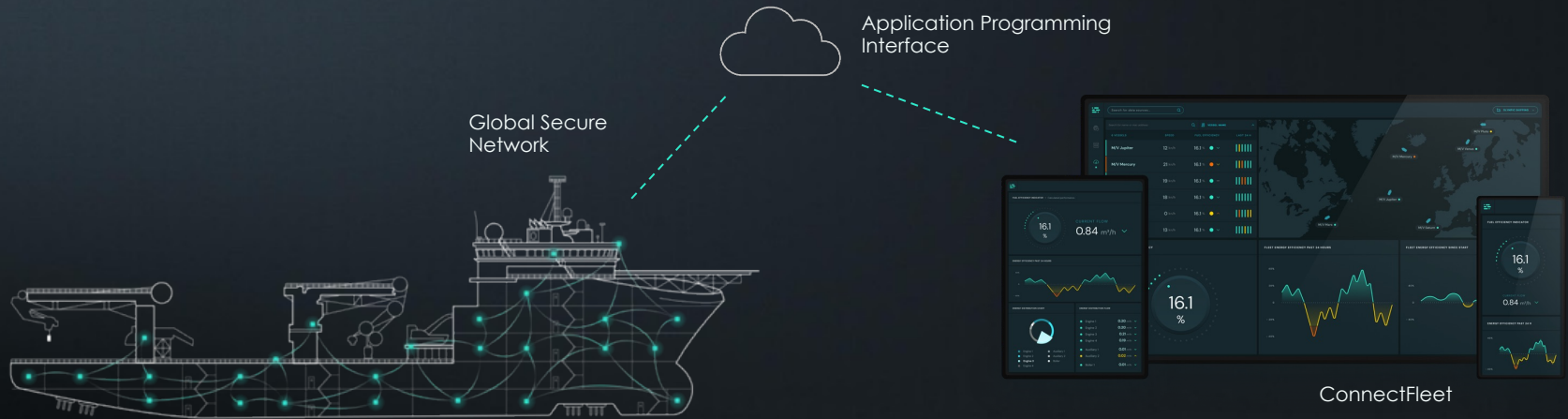
Wired Wireless





# Easy sharing data

Mesh nodes transfer selected data, such as fuel meter readings, wireless to the bridge and ashore. The data lake is securely protected when routed to your decided unit, through global secure network (VPN) and API.



Wireless nodes through the vessel  
The building block for full Onboard Wireless Connectivity.

# Main Features



## Easy and quick installation

No cables needed. Easy and effective installation in hours, even while vessels are in operation. Secure network.



## Simple terms and low cost of ownership

All costs embedded in a monthly fee, including hardware and software installation, updates and support services.



## Long lifetime

Remote updates and dedicated support services ensure long lifetime, future proof functionality and carefree ownership.



DATA OVER TIME Avg value per 15 min

### Export data

### Live data

LIVE DATA

TIME PERIOD FROM: 2022-11-06 10:39 TO: 2022-11-09 10:39

Search for data sources by tag, make, measure



SHIP 1		
<input checked="" type="checkbox"/>	Main Engine Flow Rate [(l/day)]	SUPERtrol 1 Flowmeter
	Main Engine Grand Total [(l)]	SUPERtrol 1 Flowmeter
<input checked="" type="checkbox"/>	Aux Engines Flow Rate [(l/day)]	SUPERtrol 1 Flowmeter
	Aux Engines Grand Total [(l)]	SUPERtrol 1 Flowmeter
SHIP 2		
<input checked="" type="checkbox"/>	Aux Engine Flow Rate [(l/day)]	SUPERtrol 1 Flowmeter
	Aux Engine Grand Total [(l)]	SUPERtrol 1 Flowmeter
<input checked="" type="checkbox"/>	Supply Flow Rate [(l/day)]	SUPERtrol 1 Flowmeter
	Supply Grand Total [(l)]	SUPERtrol 1 Flowmeter

Data visualisation

Compare data

Main Engine (Flow Rate) Aux Engines (Flow Rate) Aux Engine (Flow Rate) Supply (Flow Rate)

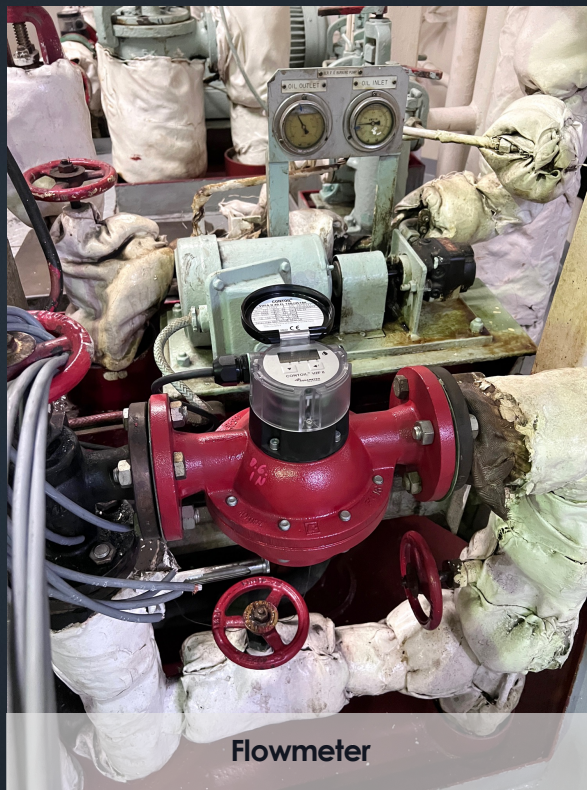
SL

11:28

# Typical Installation



Mounting gateway



Flowmeter



IP44 for engine and wet areas



Standard node



If you don't **know** your **real-time fuel consumption**, it is difficult to **reduce** it, **validate** it or **control** it .



# Many thanks for listening!

Questions are very welcome!