



Bernhard Schulte Shipmanagement

Large-scale fleet decarbonisation

Frank Paleokrassas CEng FIMarEST

Head of Data Governance & Analytics



The Schulte Group

Ship owning, ship management, and maritime services



SCHULTE GROUP

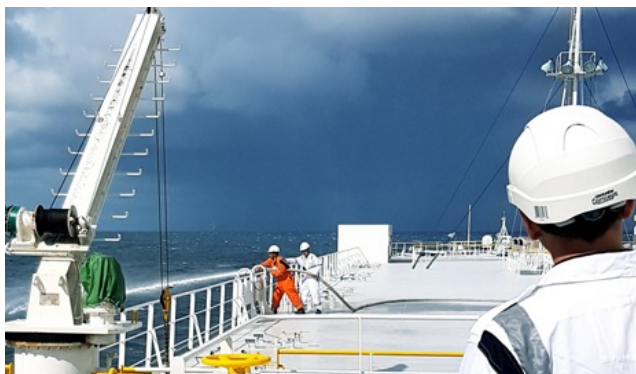
SHIP OWNING

BERNHARD
SCHULTE



90 Owned
Vessels

SHIP MANAGEMENT



600 Managed
Vessels

MARITIME SERVICES



15+ Specialised
Maritime Services



Fleet Under Management

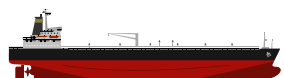
Managing vessels of all major segments, types and sizes



150

Tankers

Chemical Tanker
IMO I-III
Products Tanker:
Handy – LR2
Crude Oil Tanker:
Panamax – VLCC
Asphalt/ Bitumen
Carrier



105

Gas Carriers

LNG Steam
LNG Diesel Electric
LNG DF slow speed
Diesel
LNG Small Scale
Bunkering
LNG/ LPG Multigas
LPG Fully
Pressurized
LPG Fully
Refrigerated/VLGC
LPG Semi
Refrigerated
LPG/Ethylene



175

Bulk Carriers

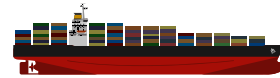
Handysize
Ultramax/
Supramax
Panamax /
Kamsarmax
Capesize
Newcastlemax
Valemax
Self-unloader



115

Container Vessels

Feeder
Ice-Class Kiel-
max
Sub-Panamax
Classic Panamax
Eco-Wide Beam
Post & Neo-
Panamax
ULCVs
(20,000 TEU)



45

Offshore Vessels

Service
Operation Vessel
Floating Product
Storage Offload
(FPSO)
Anchor Handling
Tug Supply
Platform Supply
Accommodation
Vessel



5

Cruise Vessels

1,500 – 2,500
PAX Oceangoing
Vessel



5

Other Vessels

Pure Car
Carrier/ Ro-Ro
Ro-Ro
Container
Research
Vessel
Ferry





Vessel Performance





Vessel Performance



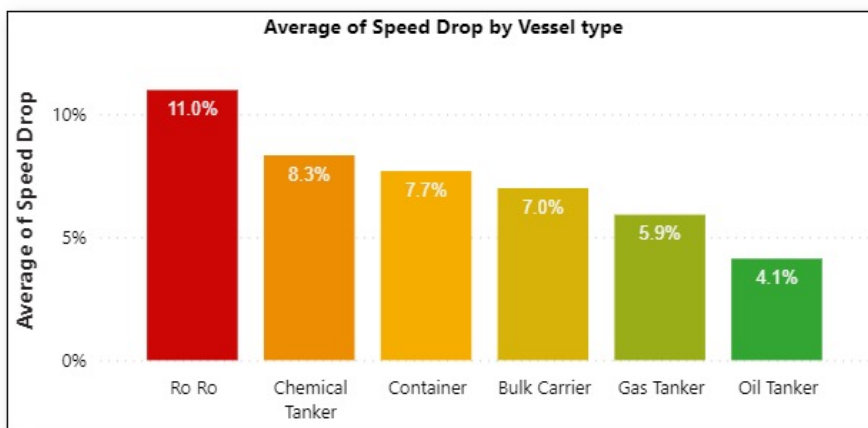
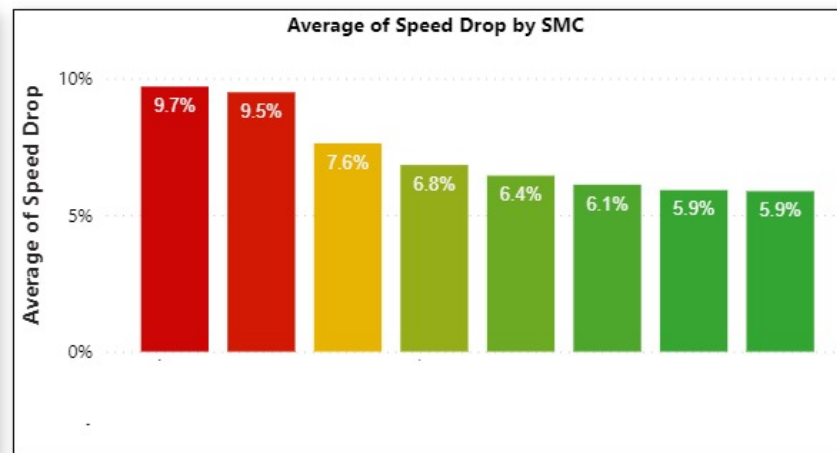
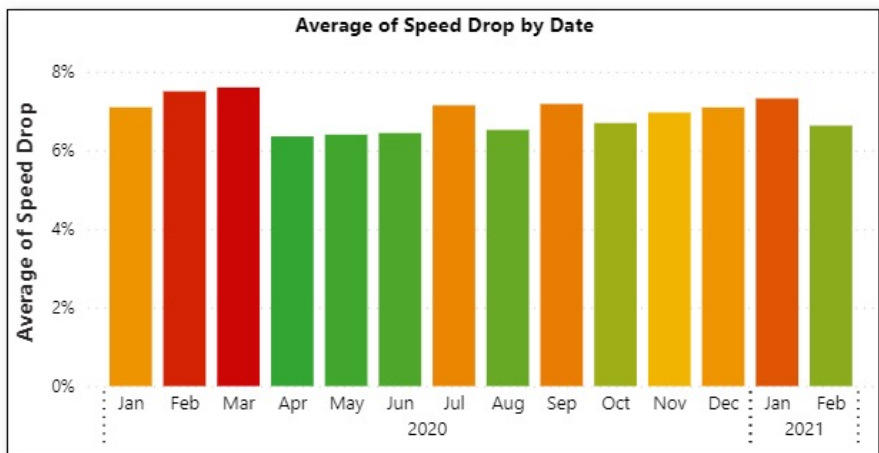
- Digital Twin benchmarking / “ISO+”
- Manual + Telemetry + AIS + Hindcast Weather
- Predictive hull inspection recommendation
- Charterparty Performance monitoring
- Actual Speed & Consumption description
- 2 & 4 Stroke Engines, Dual Fuel support
- Type & maker specific reporting and analysis
- Prescriptive engine fault diagnostics
- Targeted and automatically escalating alerts





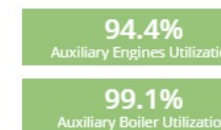
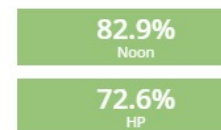
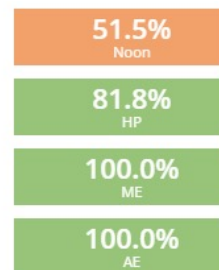
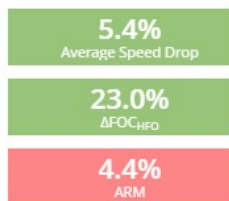
Fleet Performance





Top Vessels (Last 3 Months)

Vessel Name	Manager	Average of Speed Drop	Count Speed Drop Report
	Cyprus	19.4%	13
	Cyprus	19.1%	46
	India	16.0%	47
	Hong Kong	15.9%	29
	Hong Kong	15.9%	33
	Hellas	15.8%	28
	Hellas	15.8%	26
	Hong Kong	15.3%	40
	Singapore	15.2%	20
	Cyprus	14.9%	17
	China	14.9%	47



Vessel Performance Rating Start Date 01-Jan-2020 End Date 22-Apr-2021 Show All

[Fleet Performance Rating](#) Vessel Performance Rating KPI Glossary

12 Green Zone

Vessel(s)

Vessel Name	Vessel Performance Rating ↑
	70 %
	71 %
	71 %
	71 %
	71 %
	71 %
	71 %
	71 %
	72 %
	74 %
	75 %
	76 %
	77 %

301 Orange Zone

Vessel(s)

Vessel Name	Vessel Performance Rating ↓
	70 %
	69 %
	69 %
	69 %
	69 %
	69 %
	69 %
	69 %
	69 %
	68 %
	68 %
	68 %

32 Red Zone

Vessel(s)

Vessel Name ↑	Vessel Performance Rating
	12 %
	39 %
	40 %
	36 %
	30 %
	40 %
	12 %
	16 %
	36 %
	15 %
	40 %
	23 %



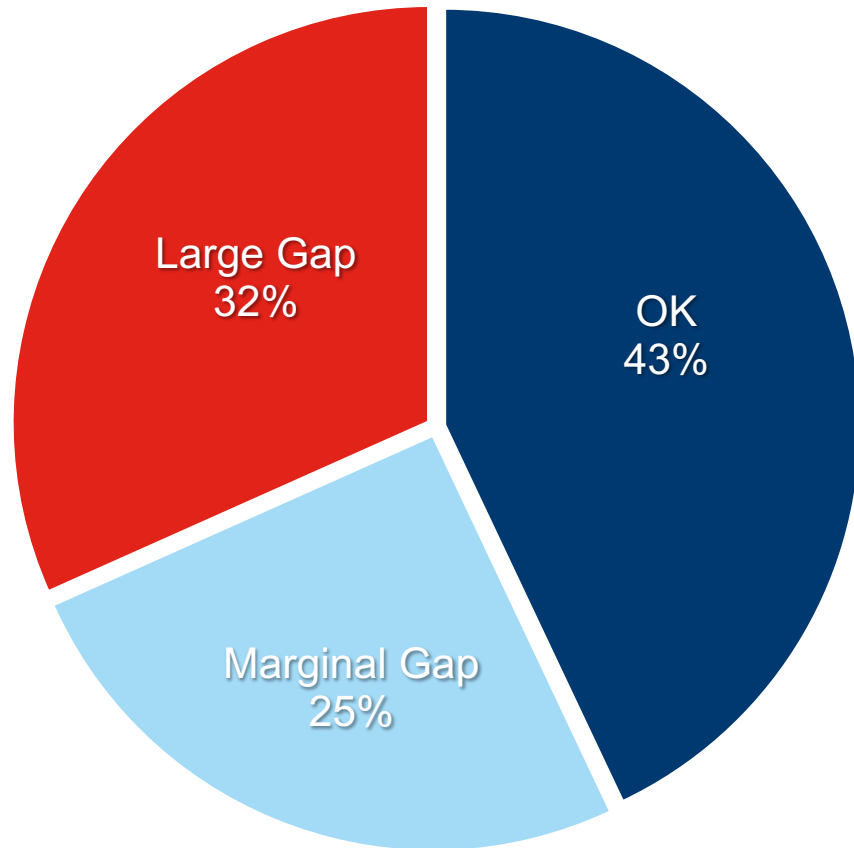


Environmental Performance

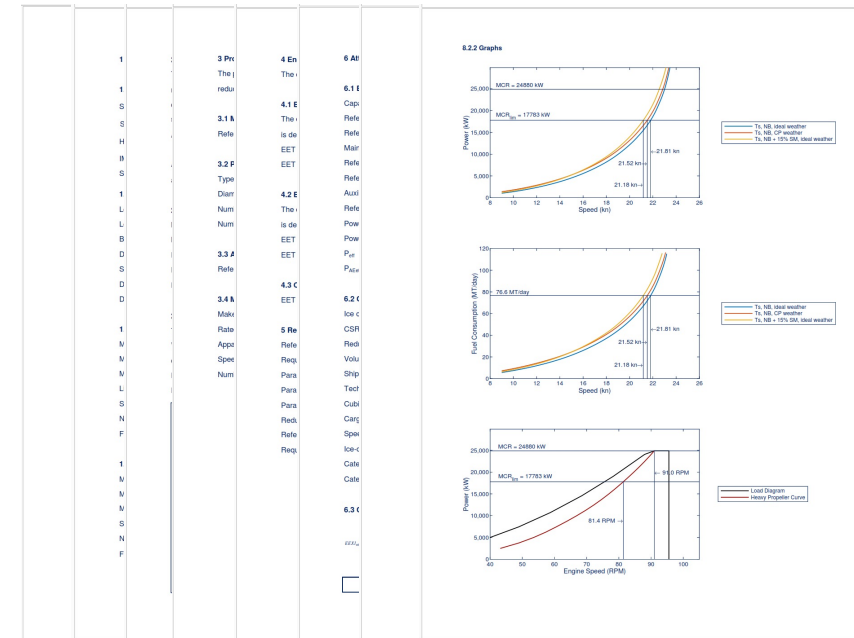




Design Indicators (EEDI / EEXI)

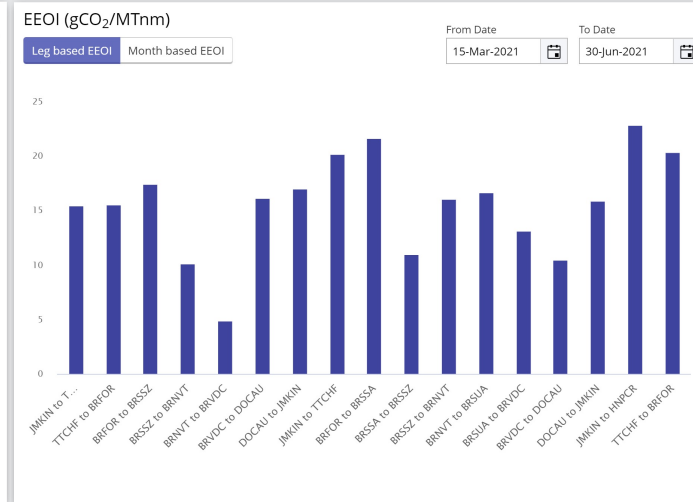
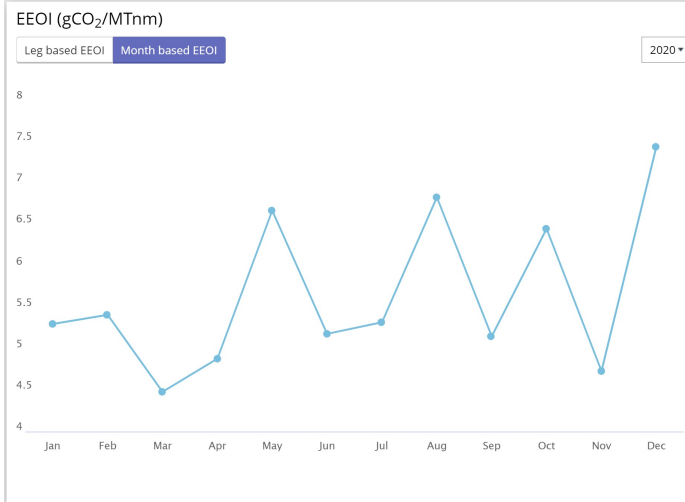
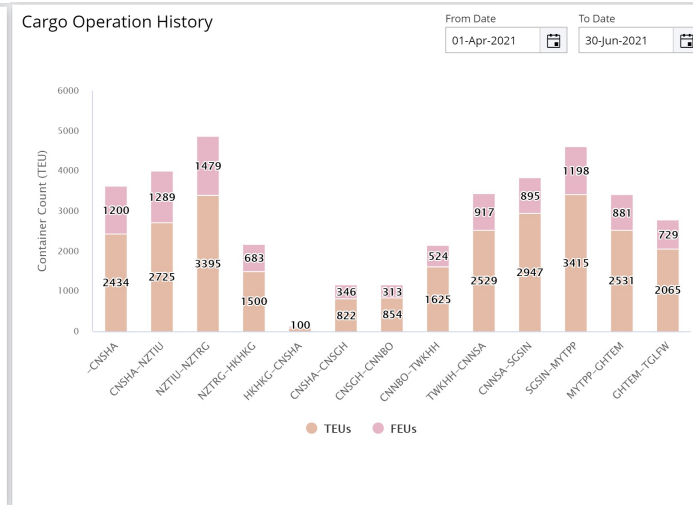
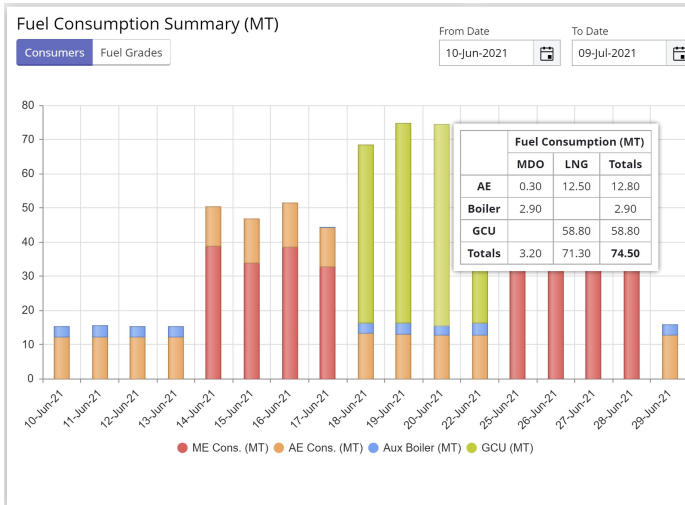


- Marginal Gap: up to -15%
- Large Gap: more than -15%





Operational Indicators



- EU MRV (EEOI)
- DCS/CII (AER)
- Poseidon Principles
- SeaCargo Charter
- EU ETS
- FuelEU

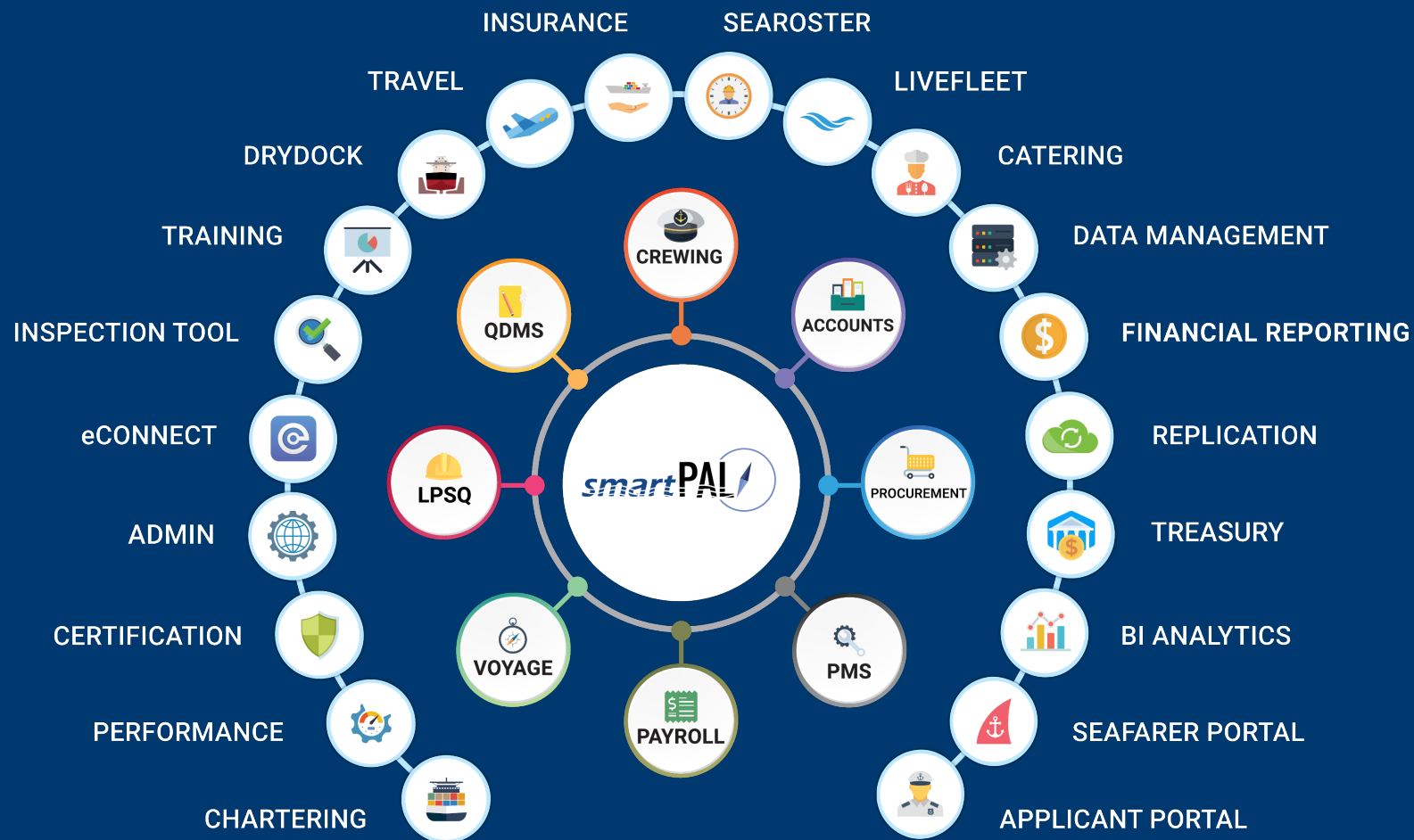


Technology





Digital Solutions. Maritime Focus





Key Customers

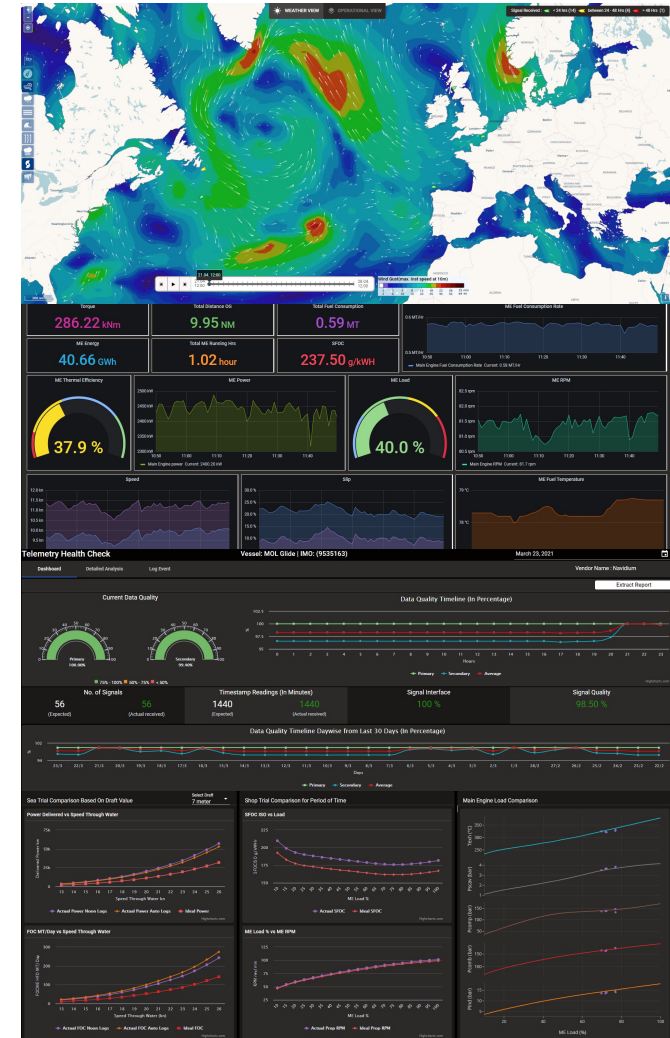




Telemetry Augmentation



- Streaming Telemetry
- Consumption & arrival prediction
- Edge computing & onboard analytics
- Autologged-powered automation:
 - Noon reports
 - Engine Performance
 - Planned Maintenance System





What sets us apart

- 138 years in shipping
- Integrated solutions
- Continuous refinement
- Own business needs



Let's talk!

Frank Paleokrassas CEng FIMarEST

Head of Data Governance & Analytics

Bernhard Schulte Shipmanagement

Frank.Paleokrassas@bs-shipmanagement.com

www.bs-shipmanagement.com

