

# **SIMULATOR EXERCISE CROSSING SINGAPORE TSS**

- **OWN VESSEL DEPARTS ANCHORAGE**
- **PILOT DISEMBARKS**
- **OWN SHIP HAS TO CROSS WESTBOUND LANE AND JOIN THE TRAFFIC OF EASTBOUND LANE OF THE TSS**
- **TARGETS CROSSING FROM HER PORT SIDE DO NOT STAY OUT OF HER WAY**

# CASE 1

**own ship 3 manoeuvres decisively**

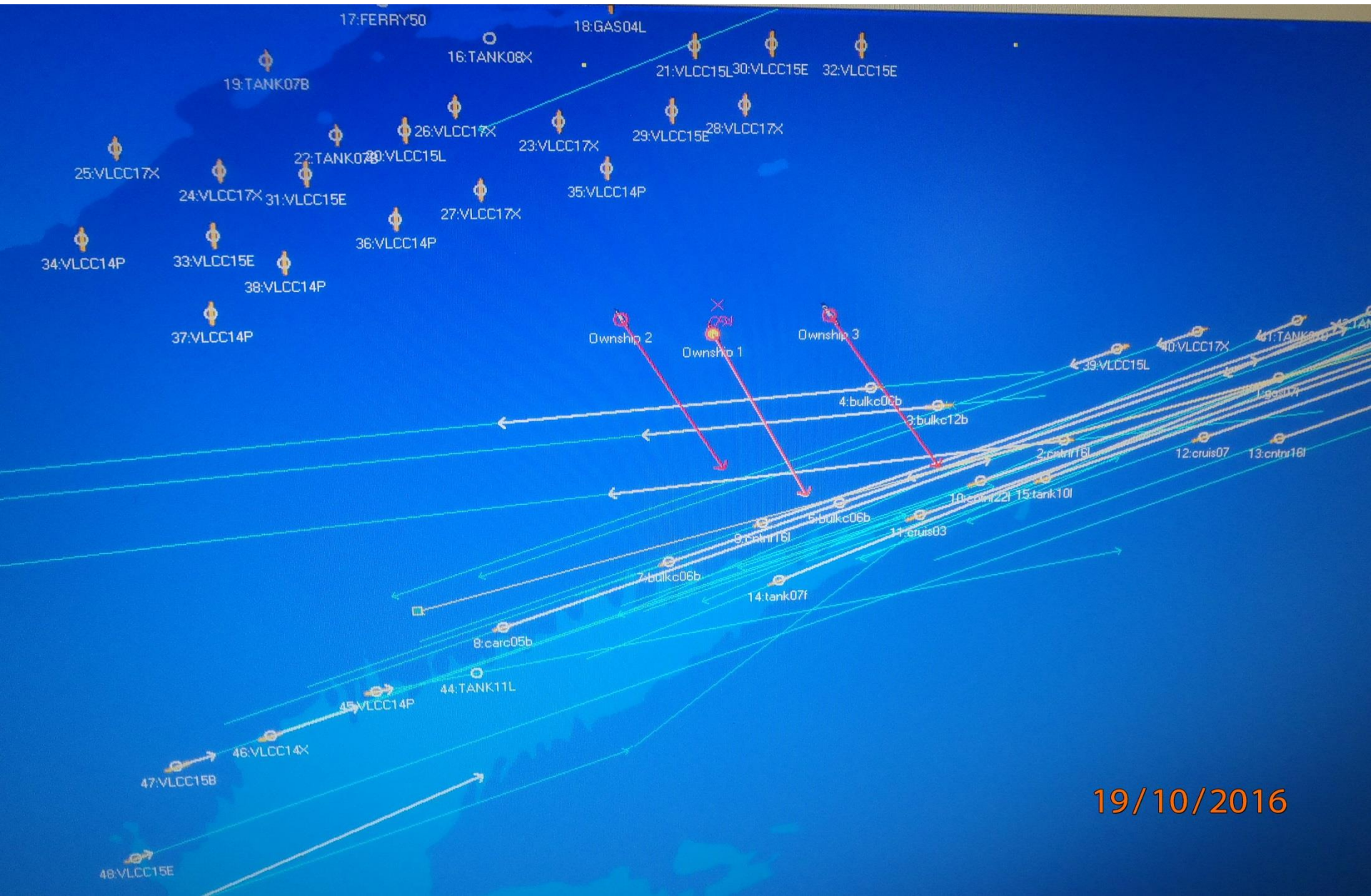
**own ship 2 manoeuvres in a conservative way**

**Both crossing successfully**

INSTRUCTOR OWN SHIP 1

# CASE 1

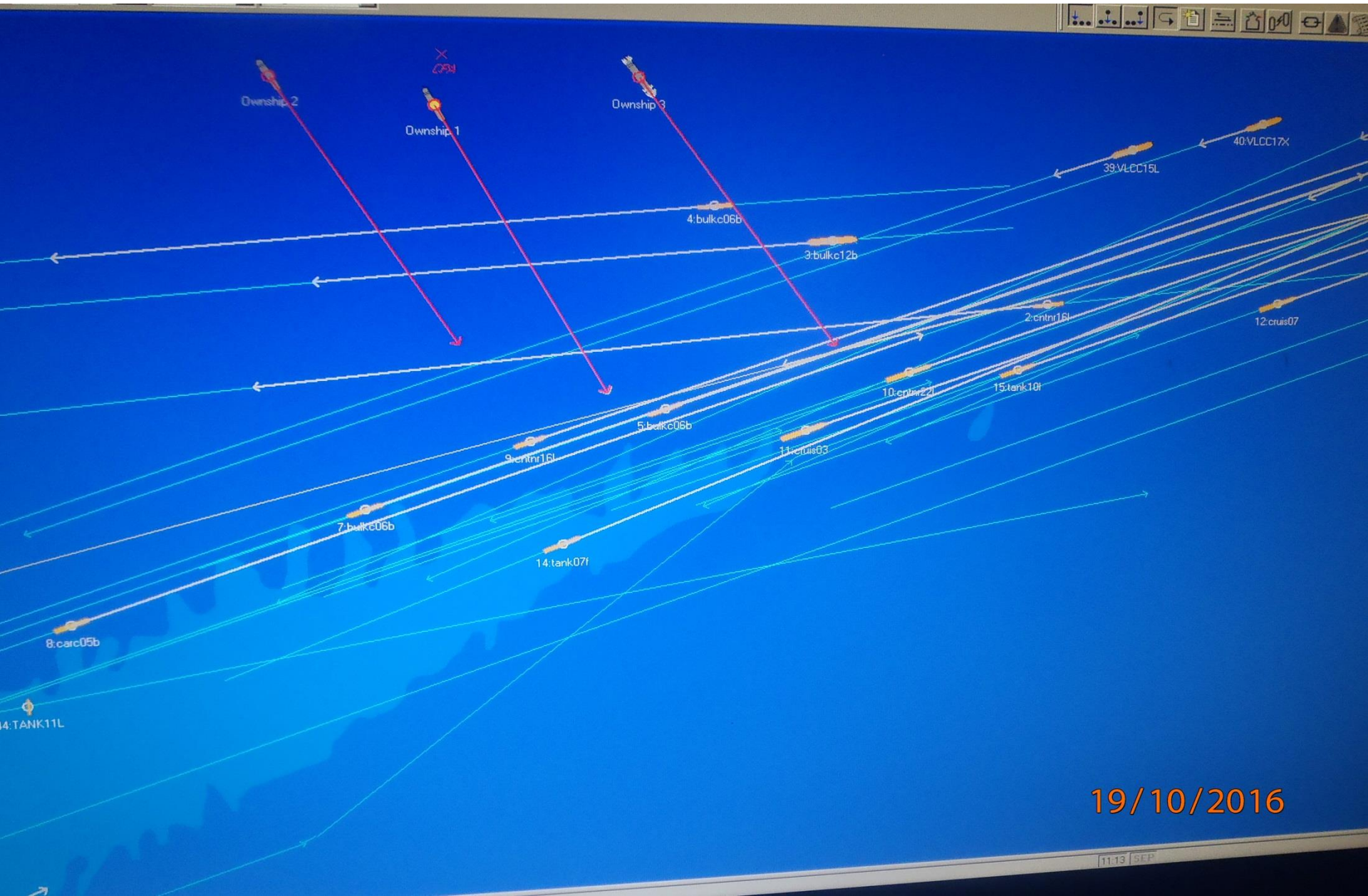
## PHOTO 1





# CASE 1

## PHOTO 2

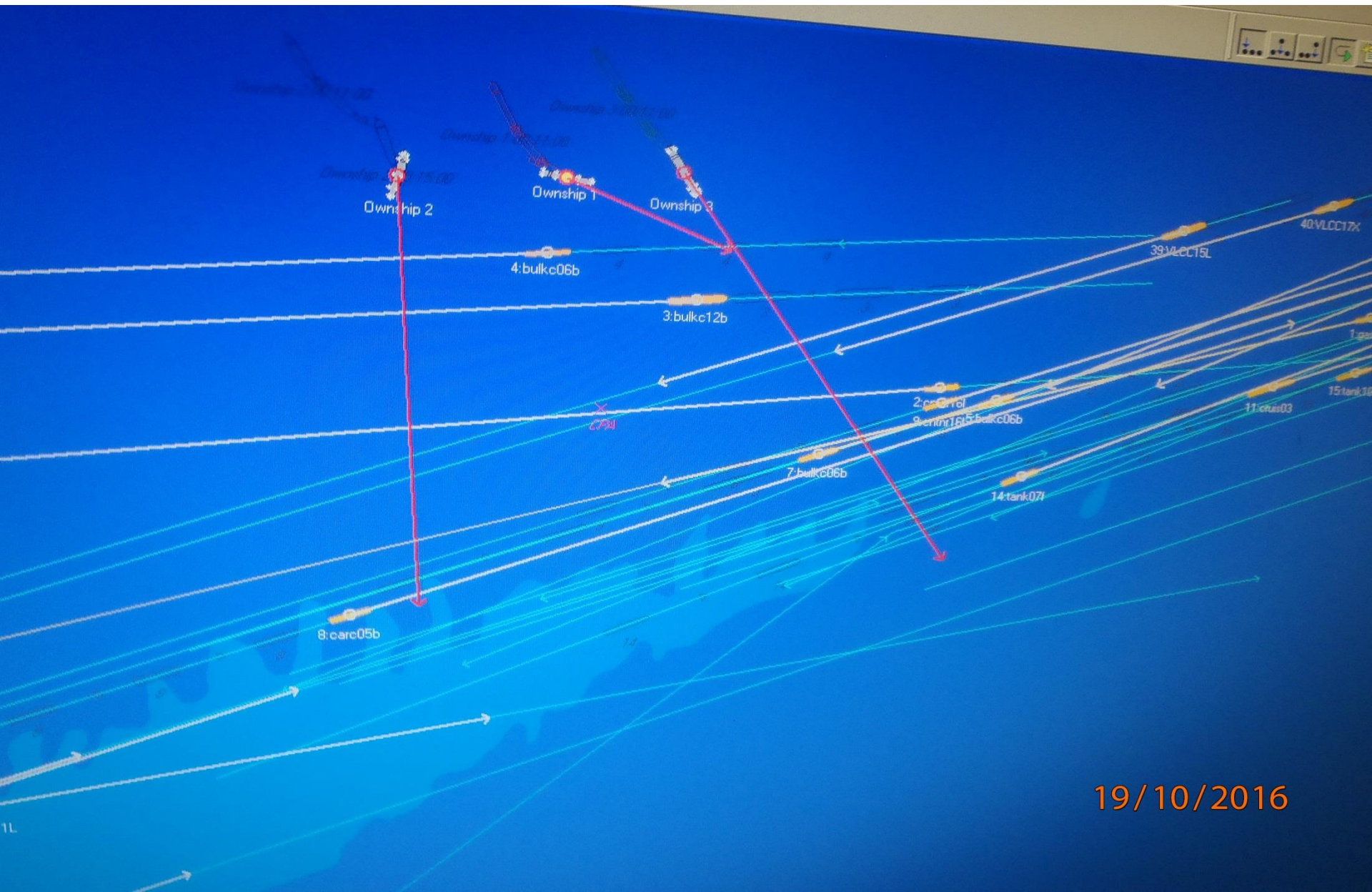


19/10/2016



# CASE 1

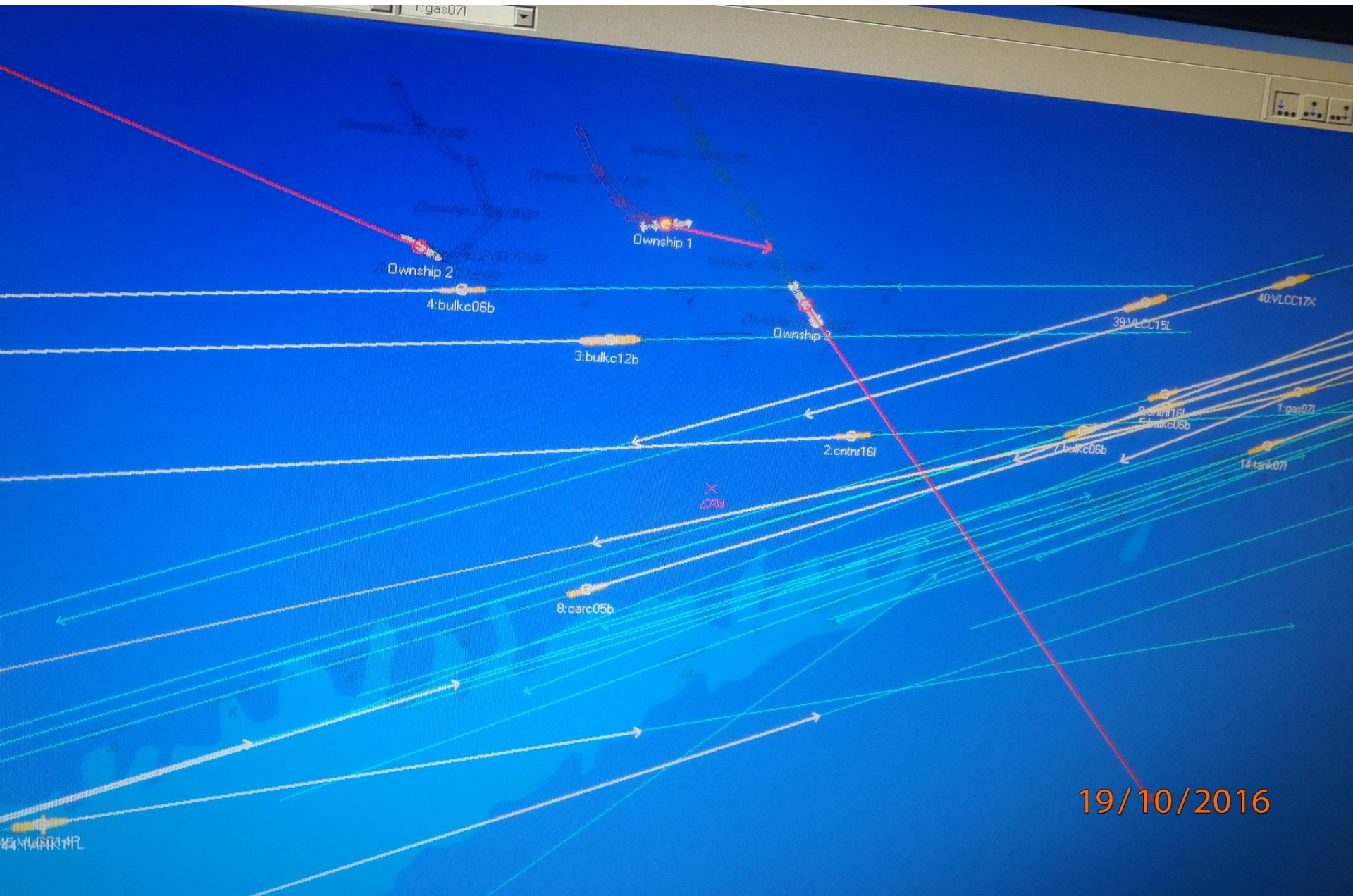
## PHOTO 3





# CASE 1

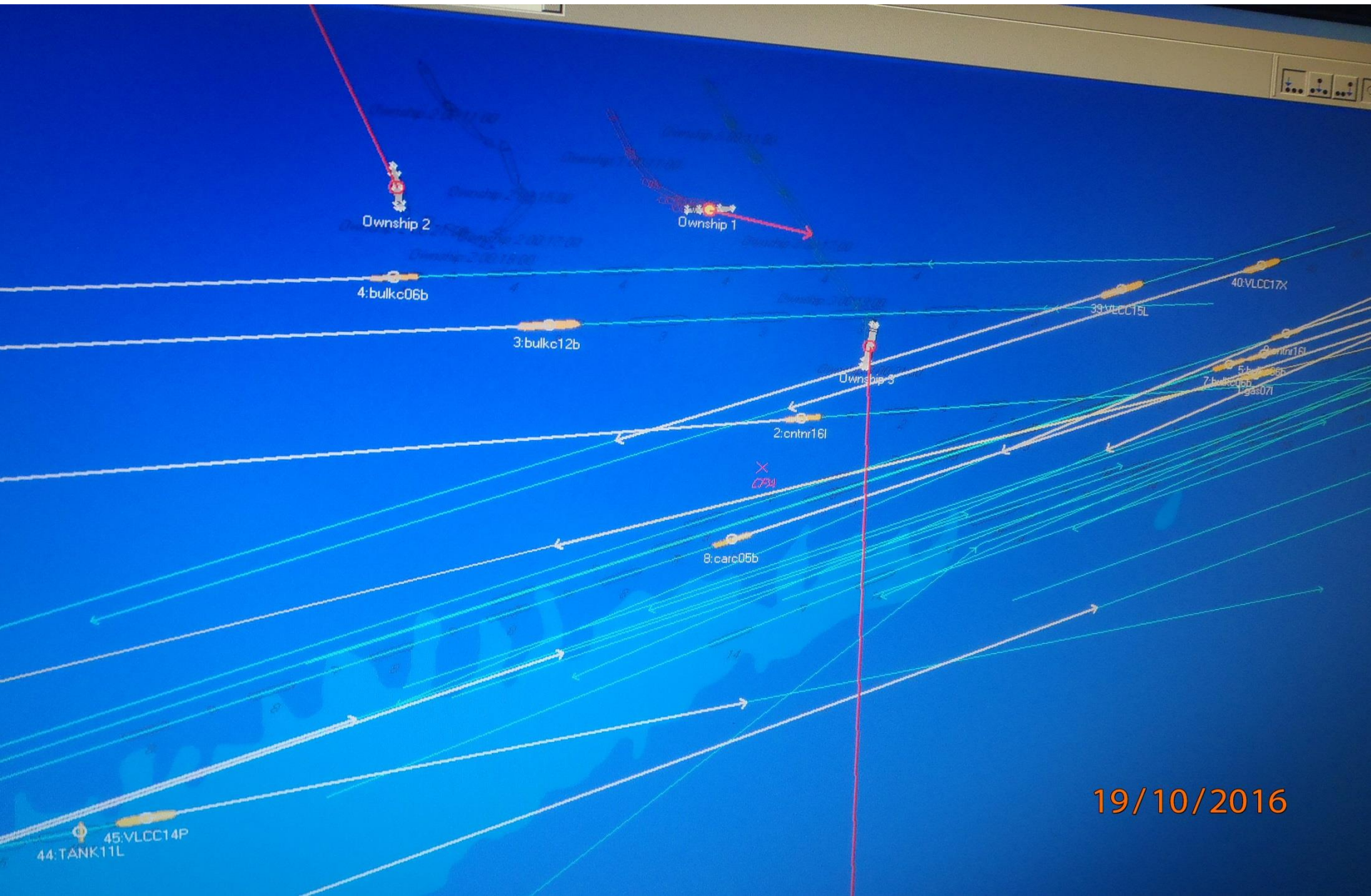
## PHOTO 4





# CASE 1

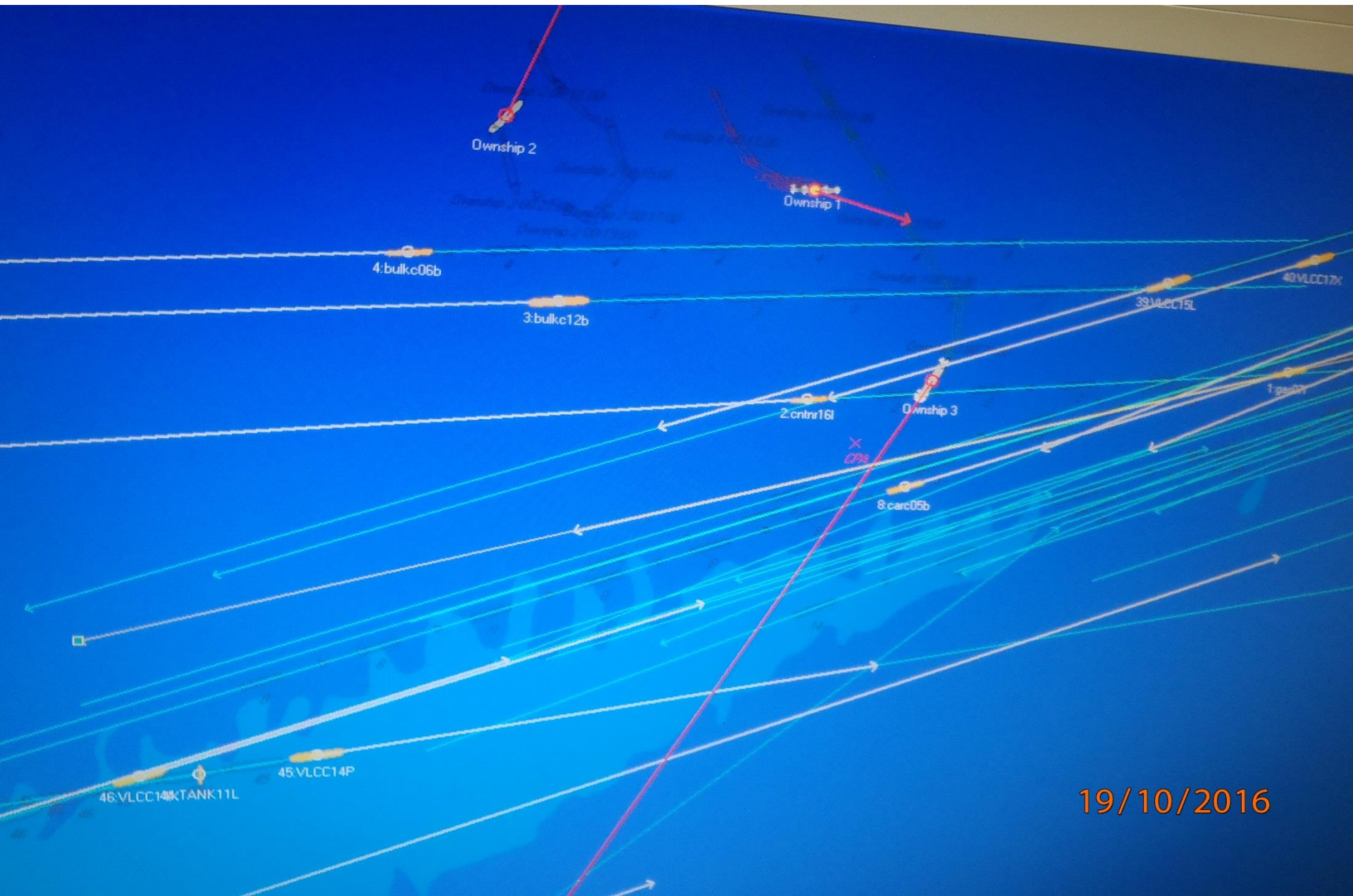
## PHOTO 5





# CASE 1

## PHOTO 6

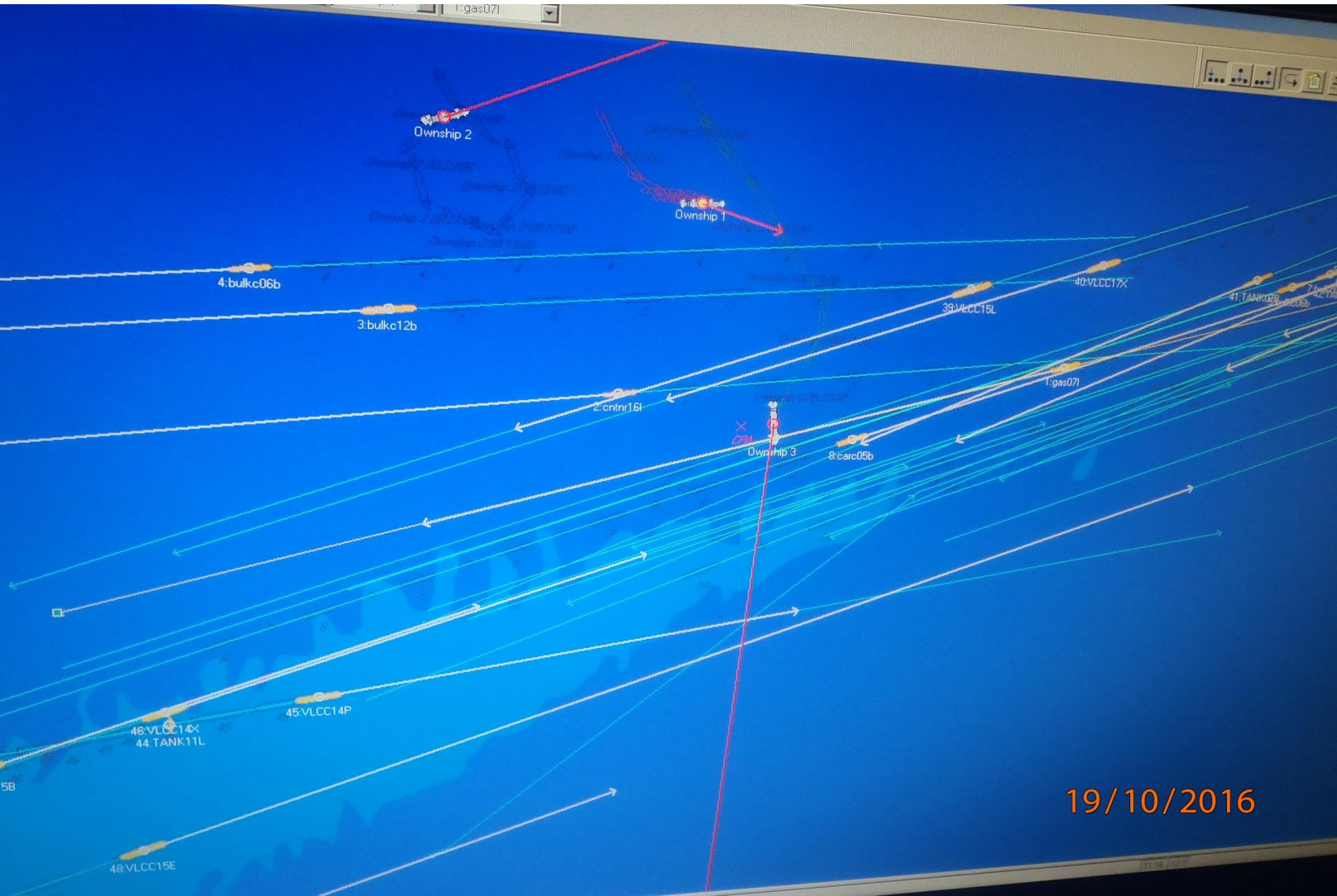


19/10/2016



# CASE 1

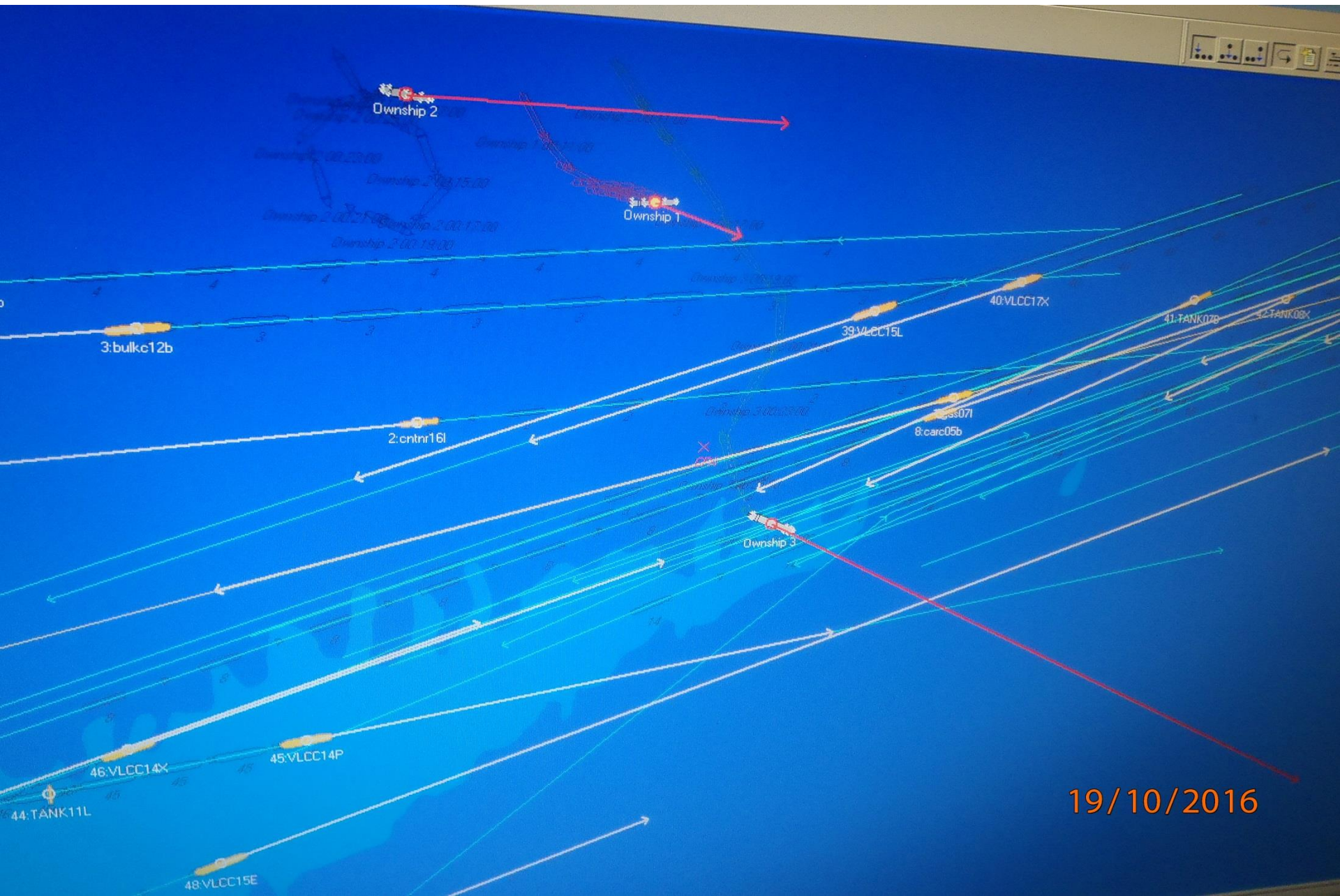
## PHOTO 7





# CASE 1

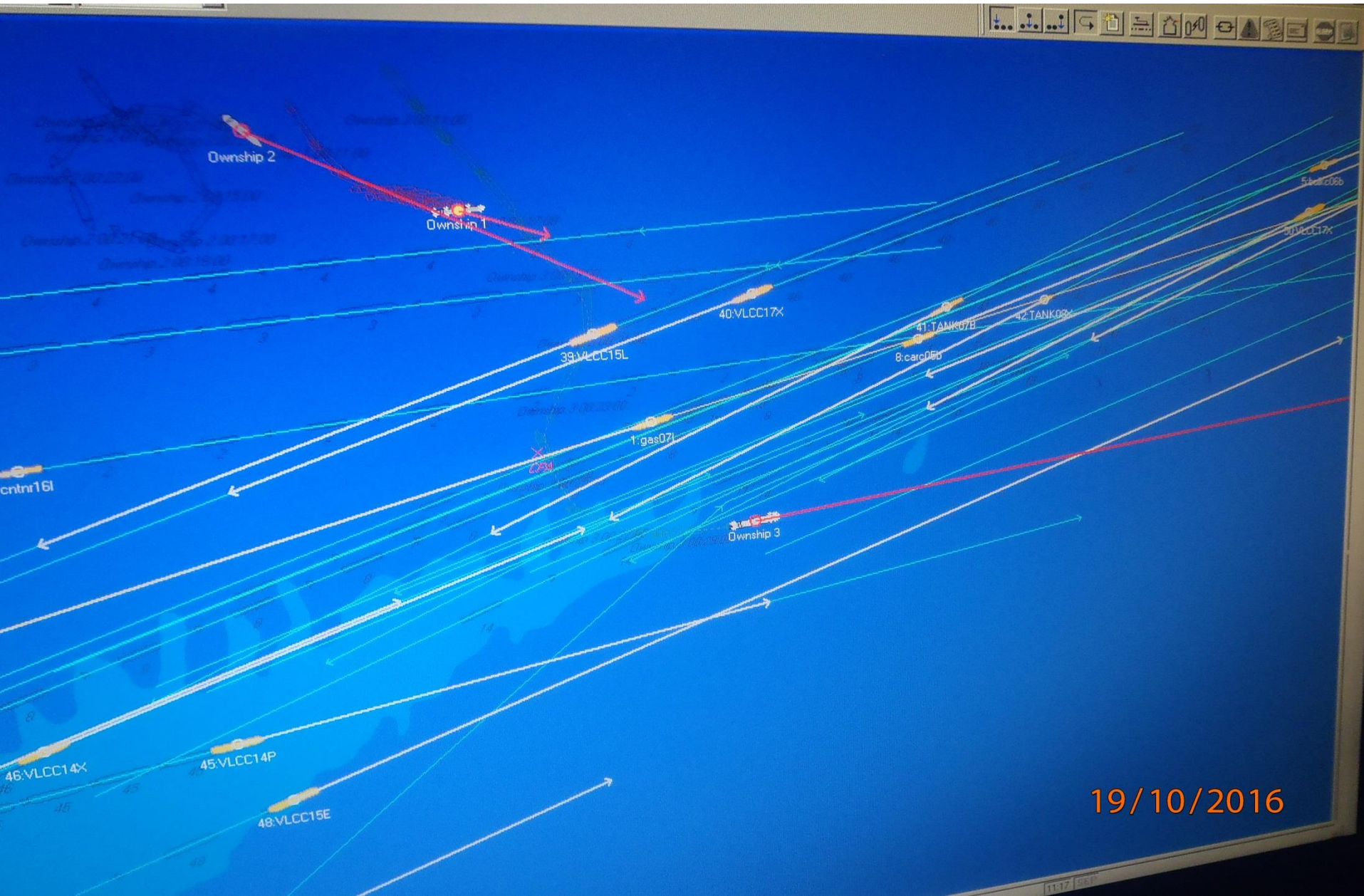
## PHOTO 8





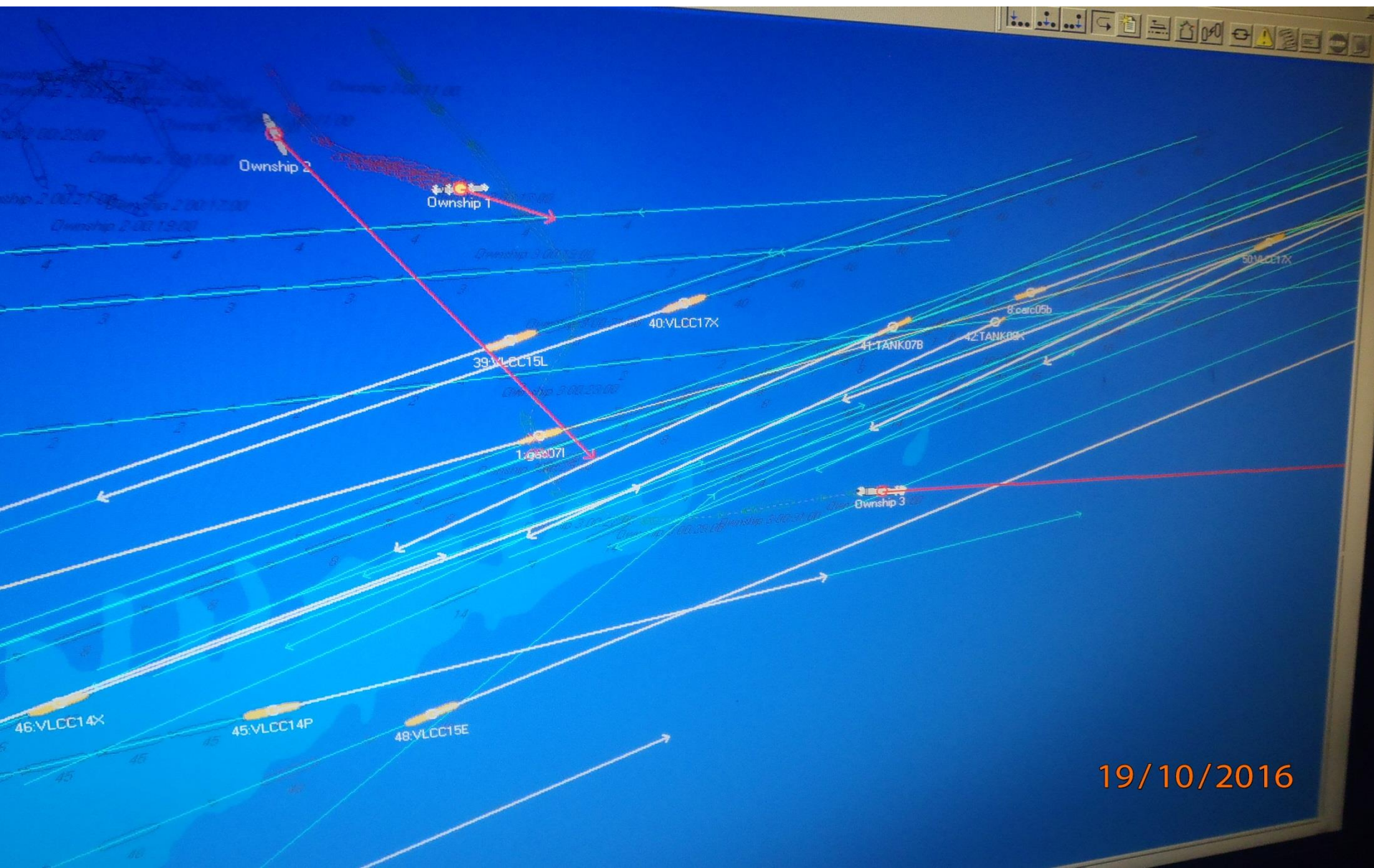
# CASE 1

## PHOTO 9





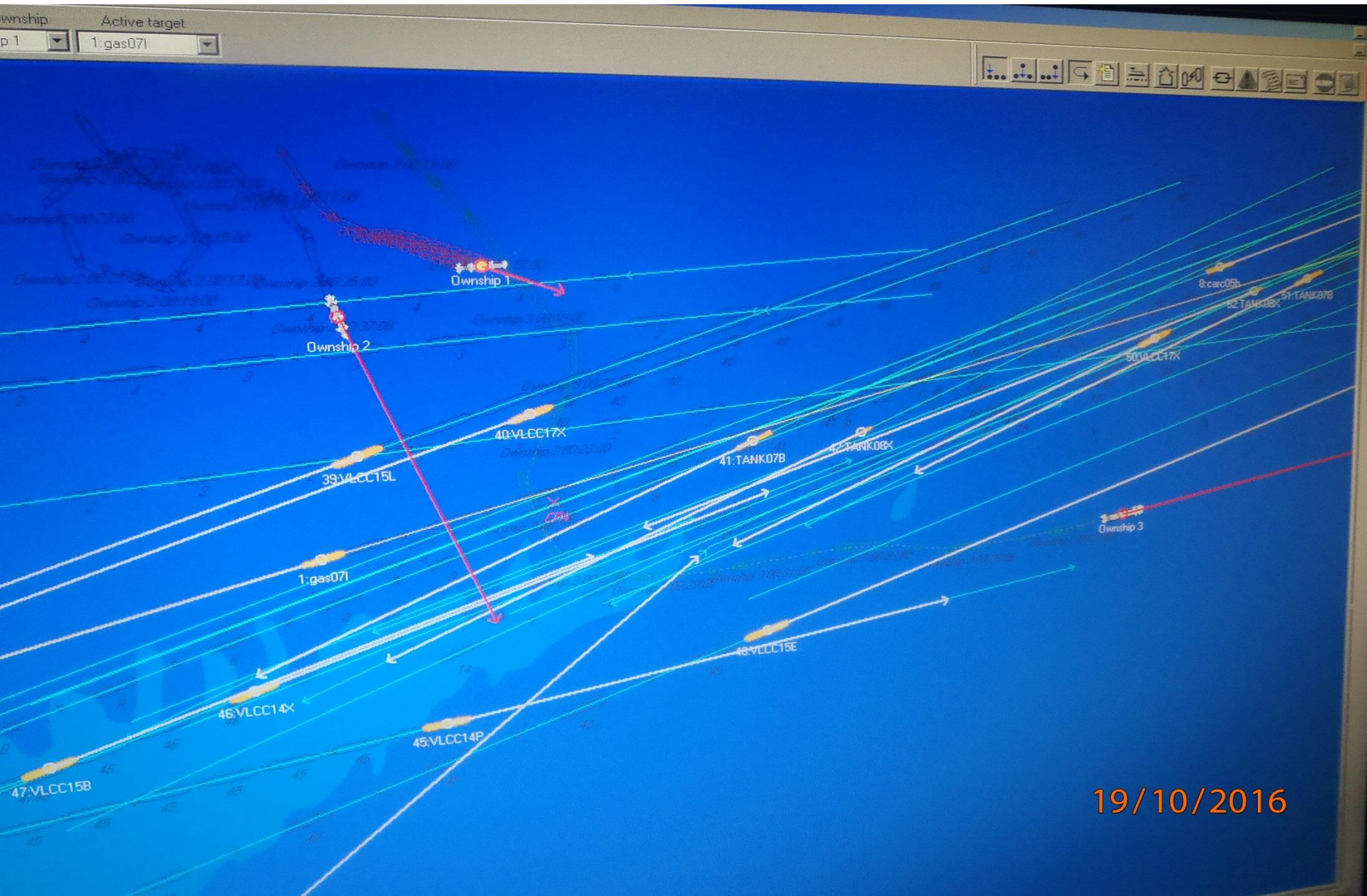
CASE 1  
PHOTO 10





# CASE 1

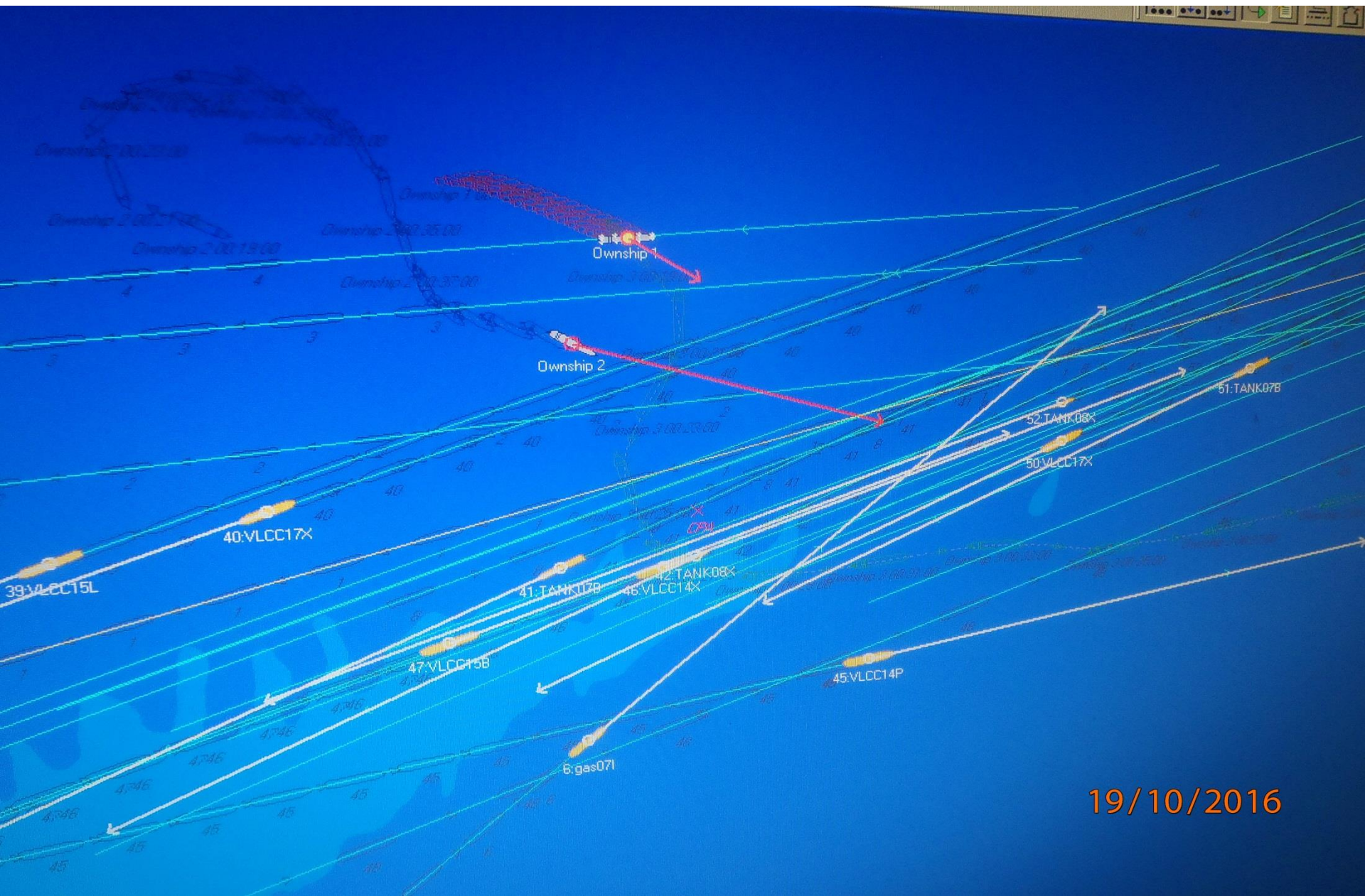
## PHOTO 11





# CASE 1

## PHOTO 12



19/10/2016



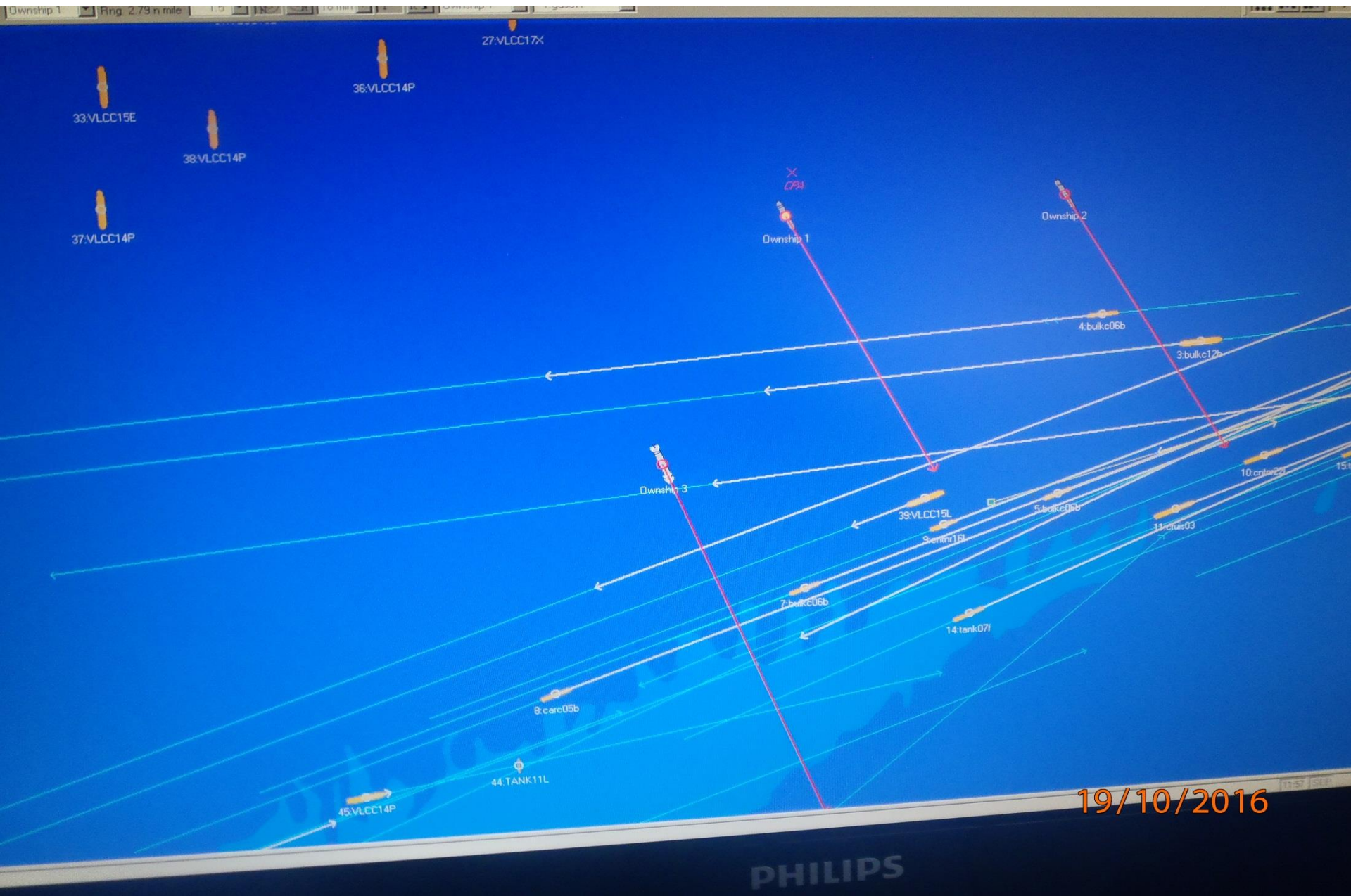
# CASE 2

**Own ship 1 manoeuvres decisively and is crossing successfully**

**Own ship 2 loiters for quite a few time – when attempting to cross, is engaged in collision**

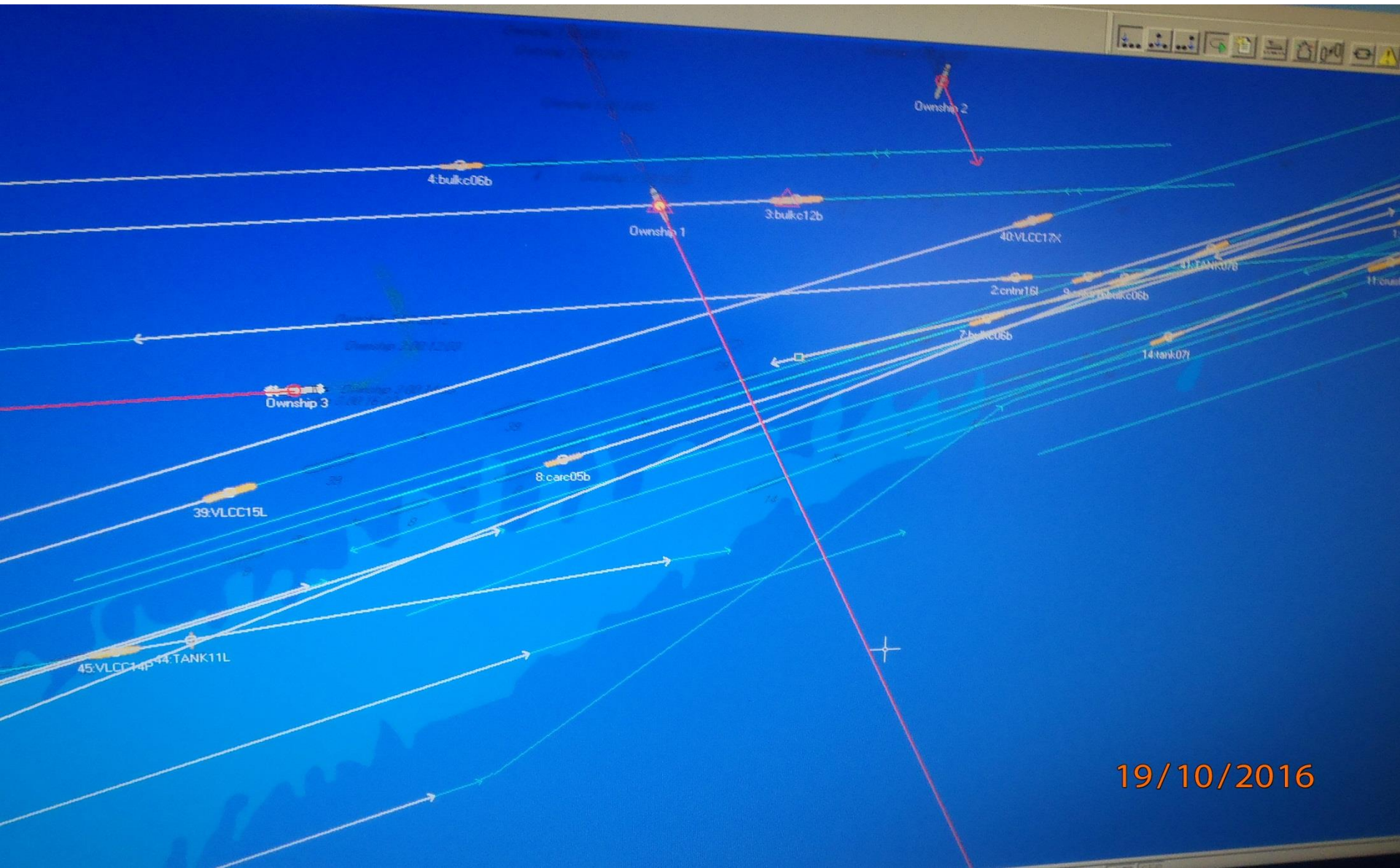
INSTRUCTOR OWN SHIP 3

# CASE 3 PHOTO 1

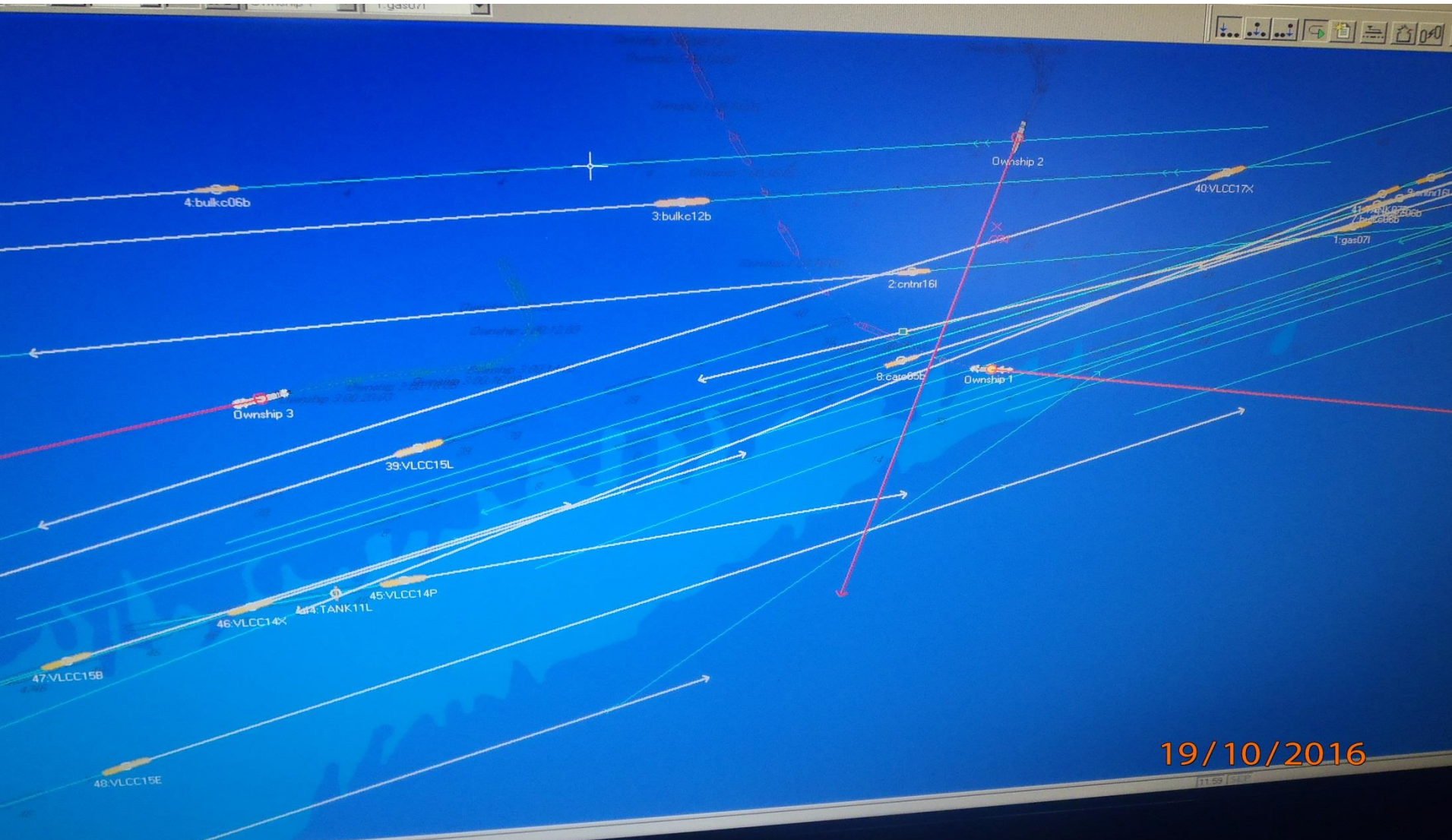




CASE 3  
PHOTO 2

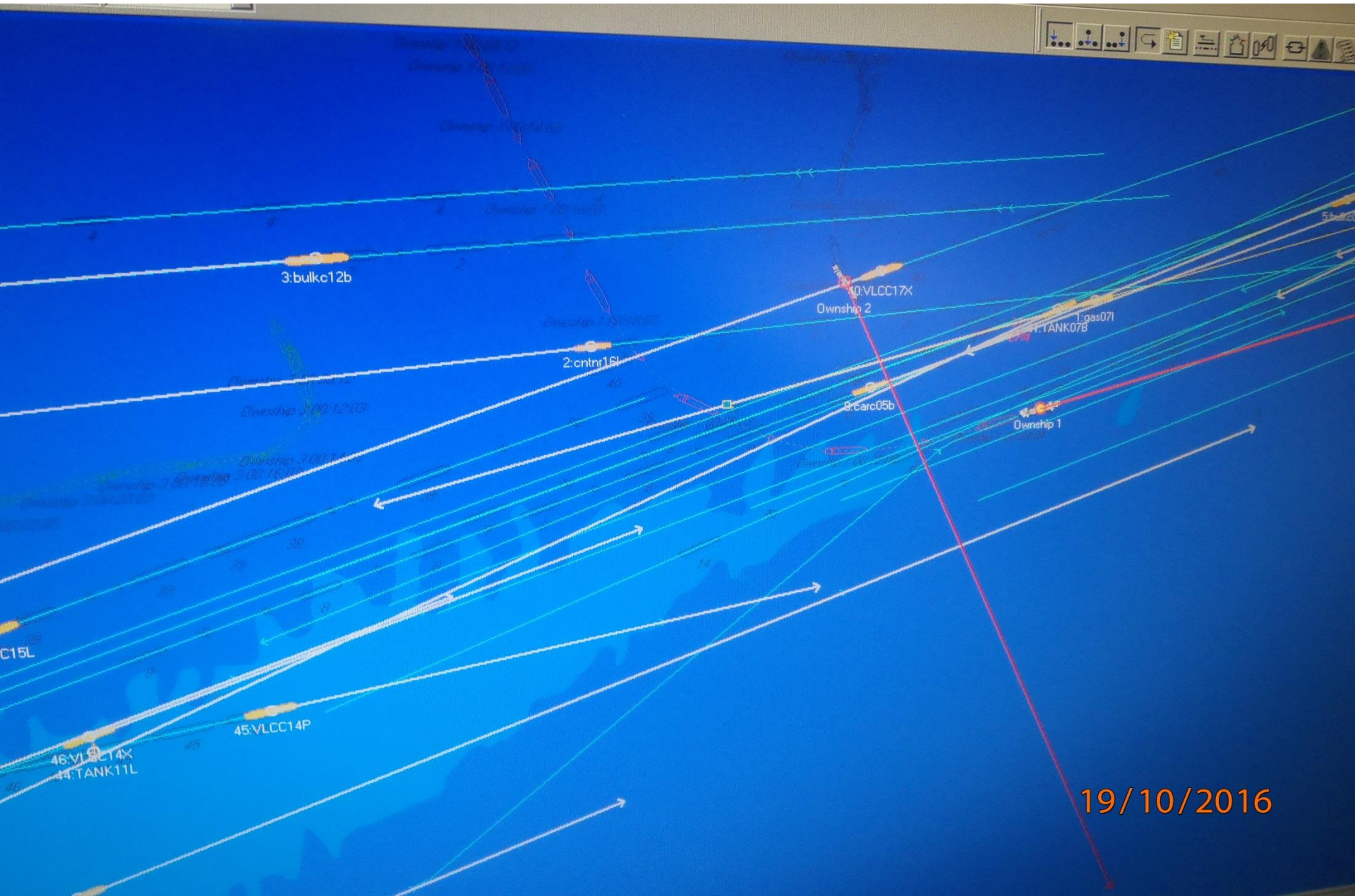


CASE 3  
PHOTO 3



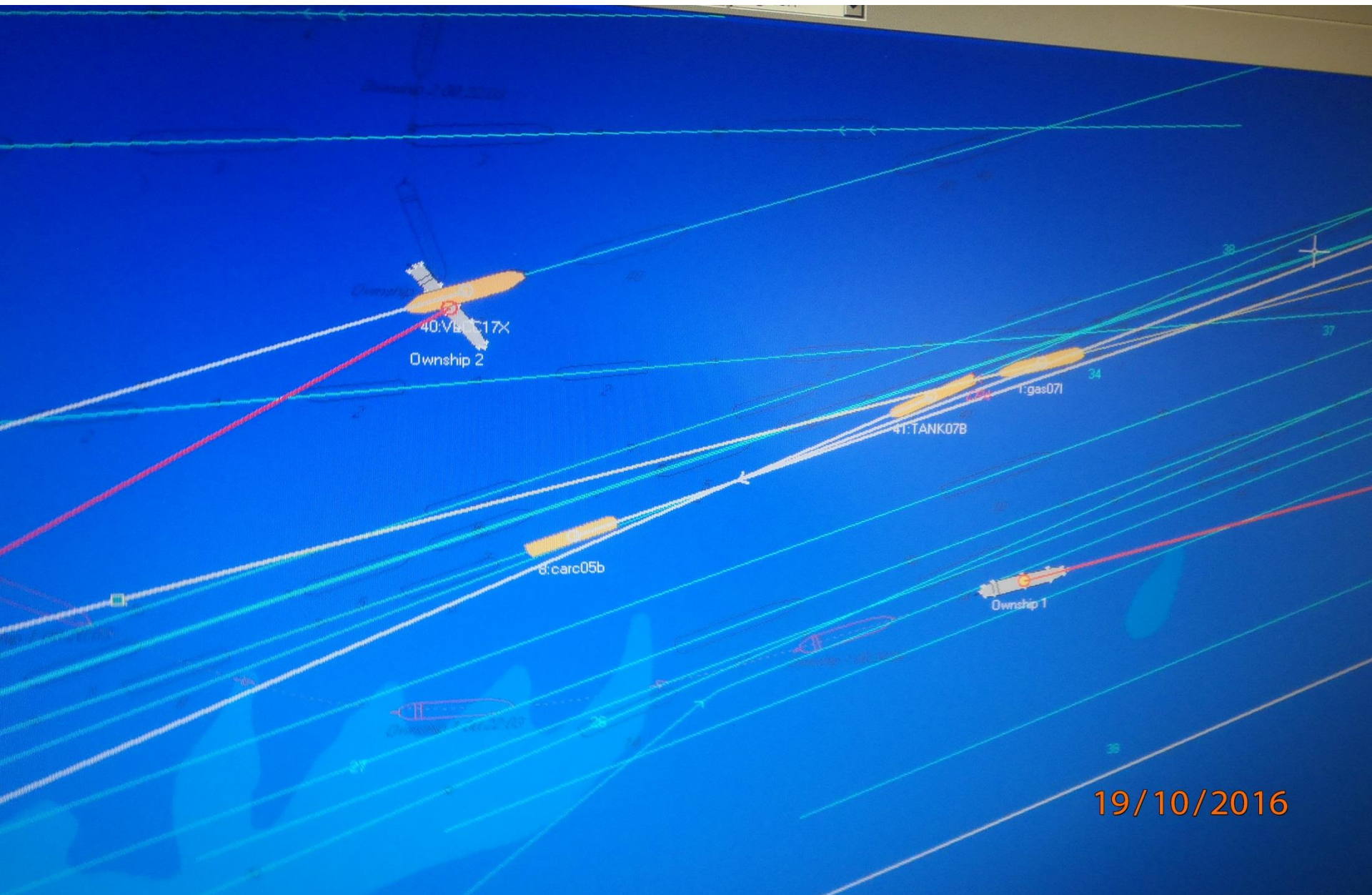


CASE 3  
PHOTO 4





CASE 3  
PHOTO 5





SIMULATOR EXERCISE  
CROSSING SINGAPORE TSS

**Group A:** 60 Officers (50%) attended the incident inv. presentation before the exercise.

**Group B:** 60 Officers (50%) played the exercise not being aware of the incident inv. conclusions and lessons learnt.

# **RESULTS**

**Prudent , conservative manoeuvre**

**GROUP A:** 8%

**GROUP B:** 4%

**Decisive action to cross**

**GROUP A:** 92%

**GROUP B:** 96%

**Collisions**

**GROUP A:** 5%

**GROUP B:** 10%



## **FINDINGS**

**Decisive manoeuvring undertaken by the vast majority of Officers in both Groups.**

**Attendance or not of the incident presentation resulted in trivial difference of behaviour between Groups.**

**The sense of Simulator (no real damage if anything goes wrong) in combination with the understanding of “COLREG is being in my side” favoured the decisive manoeuvres in the whole sample independent of Group.**

**Collisions had a big psychological impact to the 9 Officers of the 2 Groups who failed.**

# **CONCLUSION**

**It is recommended that Simulator exercises for senior Officers are designed in such a way as to bring Officers face emergencies, adverse and stressful situations.**