



KONGSBERG

Moving to open infrastructure for maritime digital technology

**... from a closed lake to an open sea ...**

Digital Ship Conference | Hamburg | Tobias Lindbæk





KONGSBERG

**Ownership & access to data do not solve any challenges.**



**Unstructured data is useless ...**





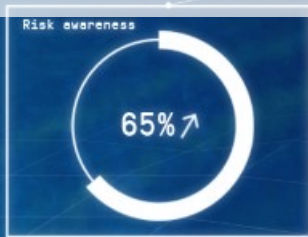
...and structured data is only valuable if you know how to use it.





**Introducing  
Vessel Insight & Kognifai Marketplace**

An aerial view of a ship with a transparent hull, revealing internal systems like engines, fuel tanks, and piping. The ship is moving through water, leaving a white wake. The background is a dark blue grid pattern.







KONGSBERG

# KONGSBERG Group

A technology powerhouse with 3 strong individual business areas







KONGSBERG

# Kongsberg Digital AS



DIGITAL OCEAN



DIGITAL ENERGY



DIGITAL WELLS



INDUSTRIAL AND COMMERCIAL PARTNERSHIPS

ECOSYSTEM

-  1000+ employees
-  80% international sales
-  33 nationalities
-  11 offices



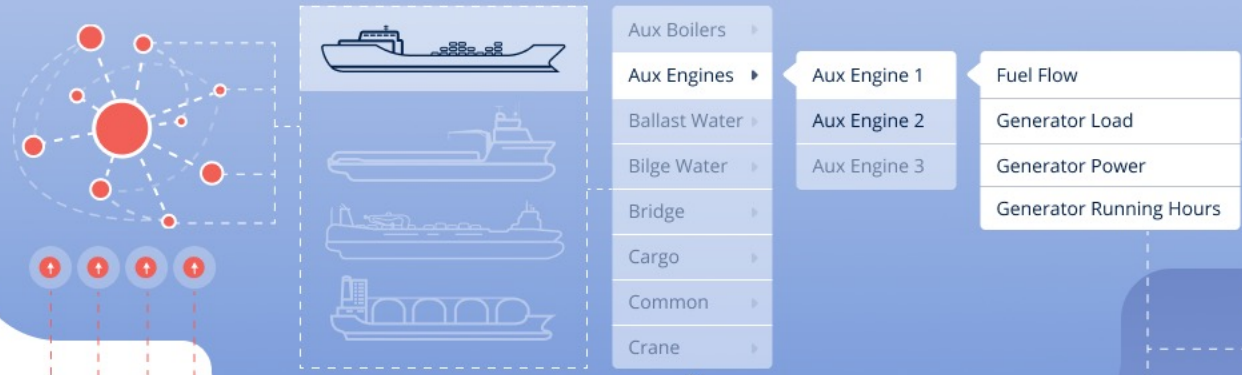




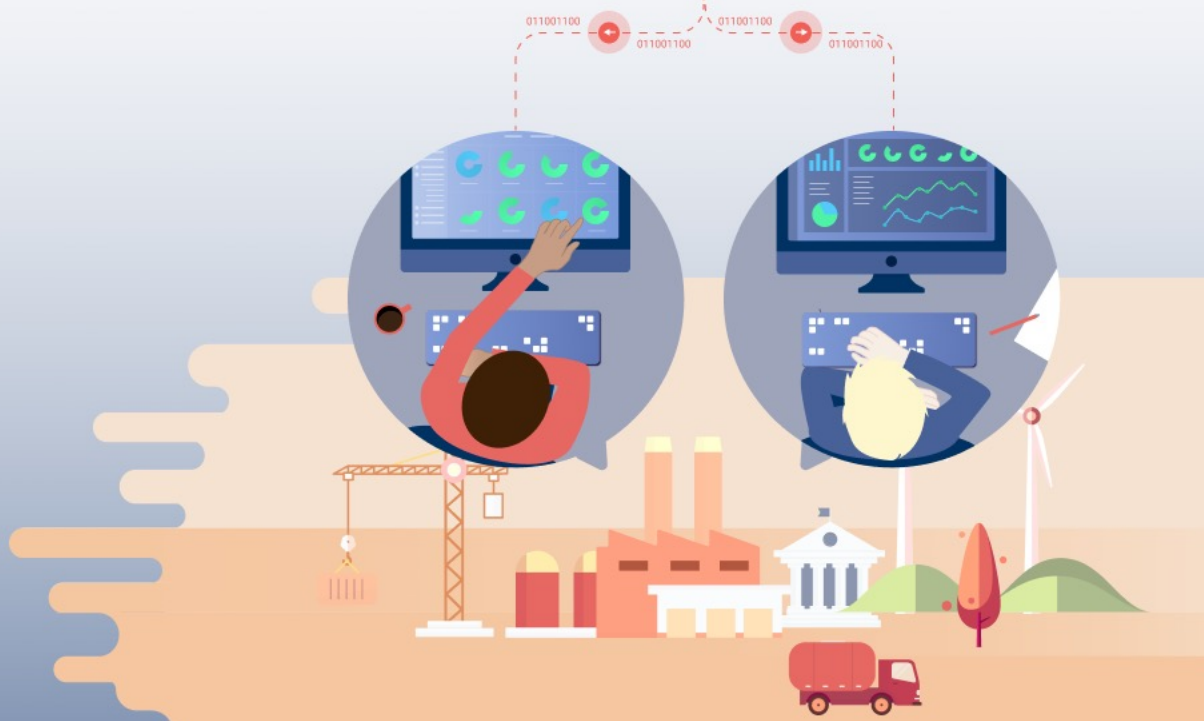
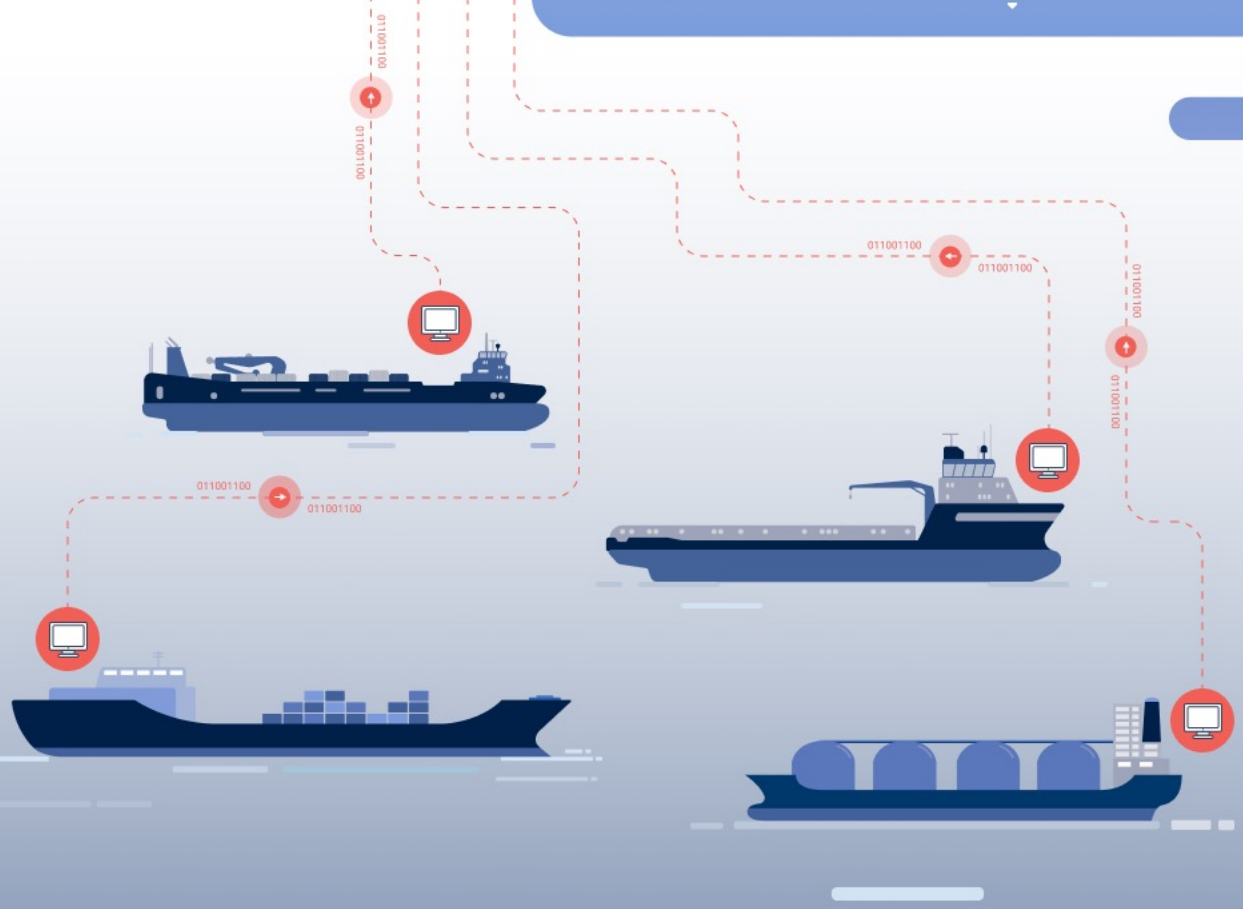
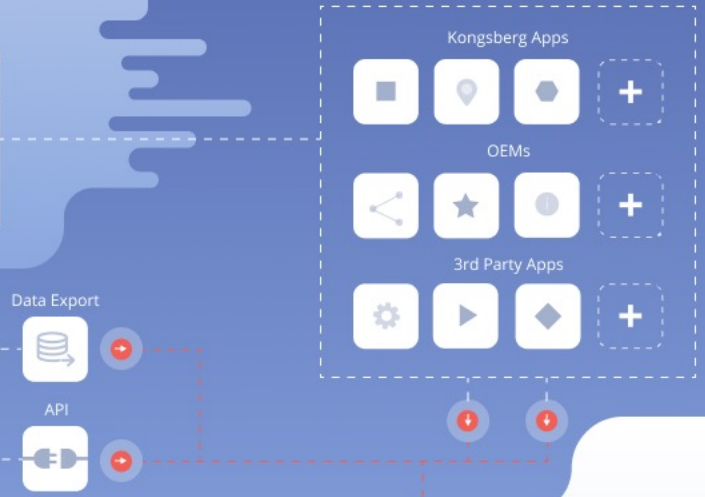




### Contextualization engine



### Marketplace





A 3D rendered cargo ship with a red hull and black upper section, sailing on a low-poly, dark blue sea surface. The ship has a white superstructure with a bridge and a helicopter deck on the deck. The text "Your physical logbooks" is overlaid in white, bold font across the center of the image.

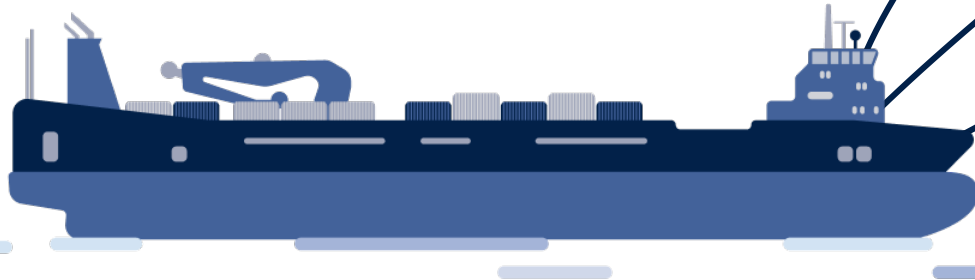
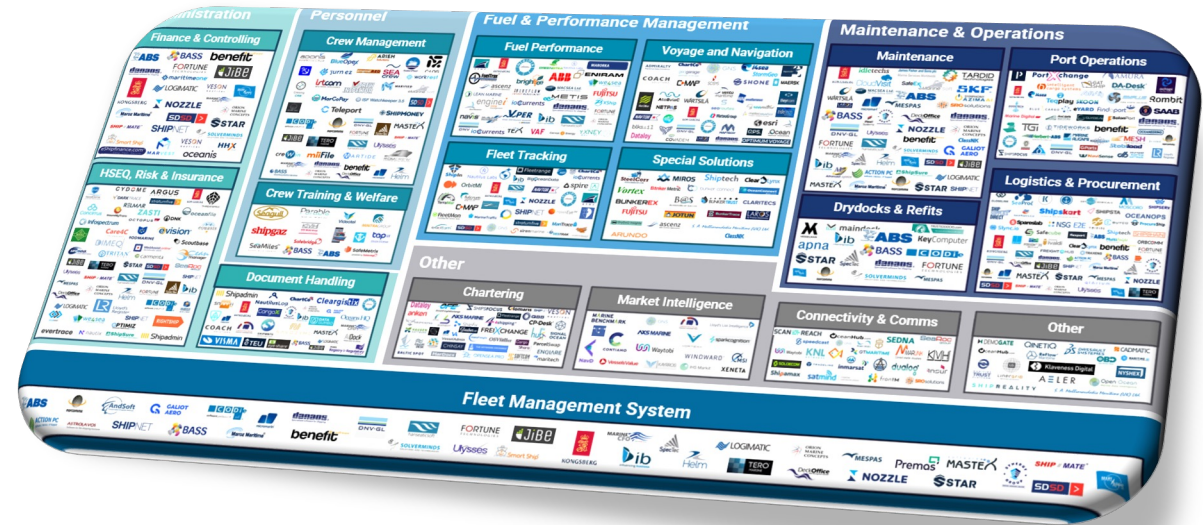
**Your physical logbooks**





KONGSBERG

# This is where we want to go!

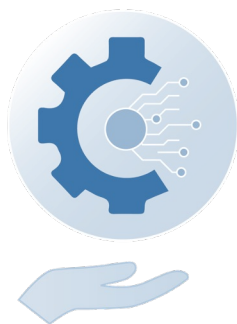






KONGSBERG

# The perfect ecosystem should:



Be standardized



Be certified by  
Class



Be Open



Be reliable and  
secure



Be trustworthy





KONGSBERG

**... from a closed lake to an open sea ...**

Thank you for your attention