

Maritime CEO Summit

A dramatic sunset over the ocean with a bright sun low on the horizon, casting a golden glow across the sky and reflecting on the water's surface. The sky is filled with dark, textured clouds illuminated from below by the sun.

Digital Ship

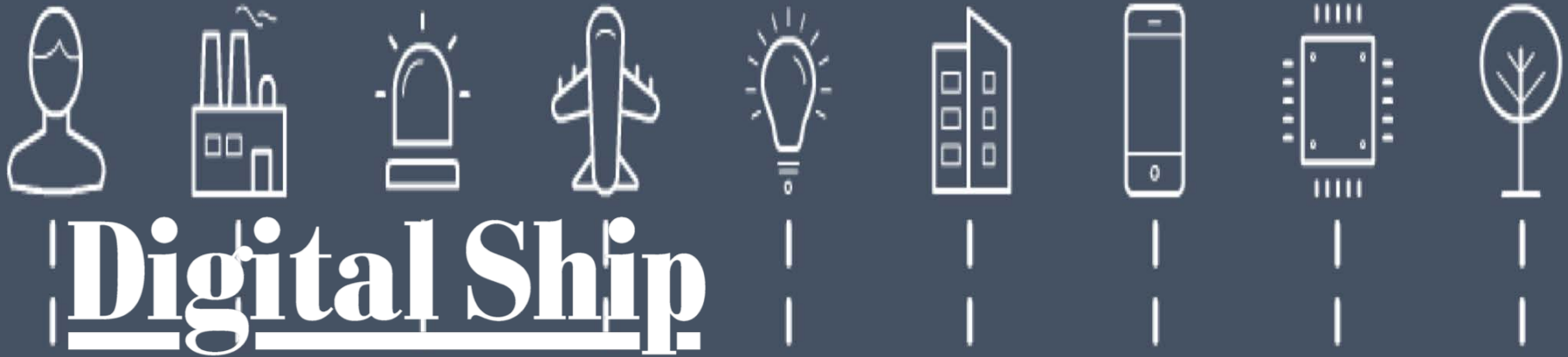
**Moderator:
Rob O'Dwyer
Editor, Digital Ship**

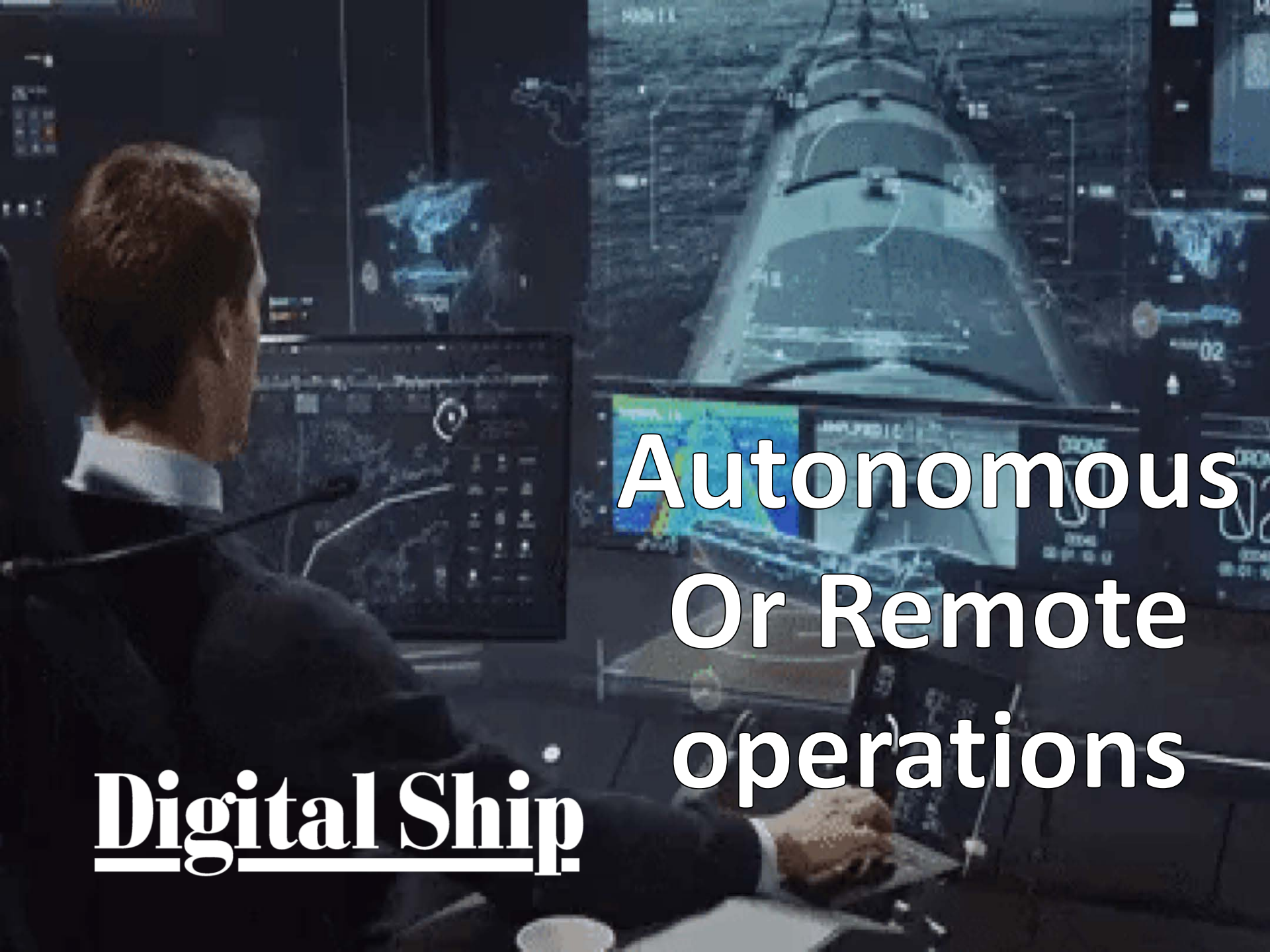
A satellite is visible in the upper left corner of the image. The main focus is a view of Earth from space, showing the continents of North and South America. The word "Connectivity" is overlaid in white text with a black outline across the center of the Earth.

Connectivity

Digital Ship

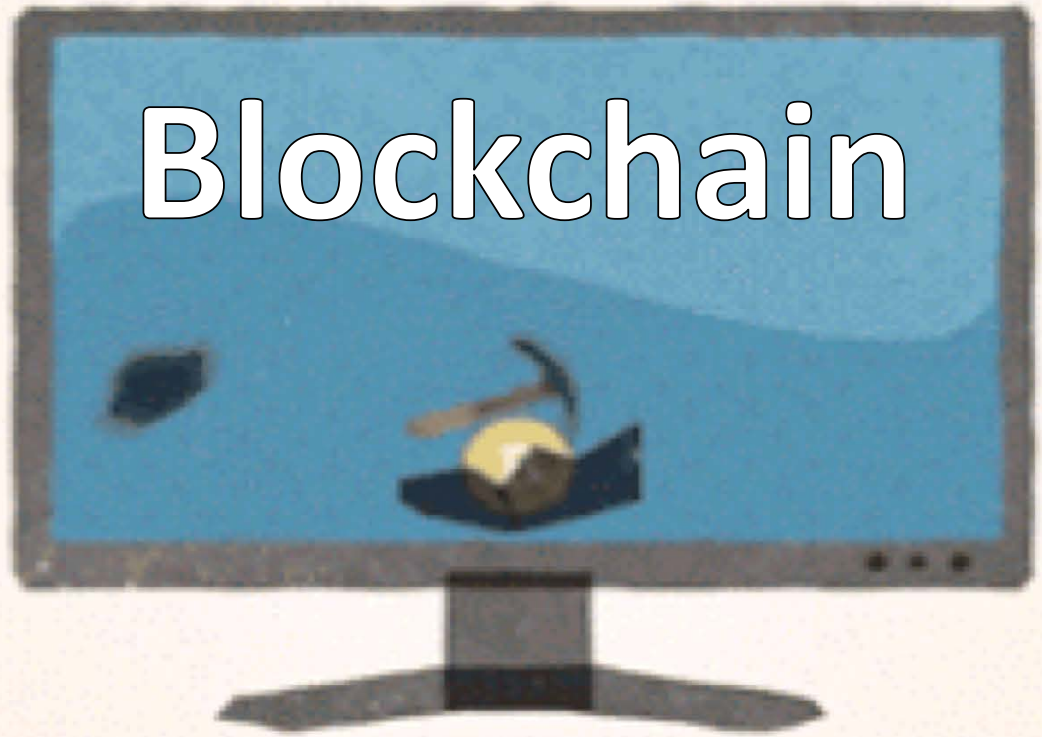
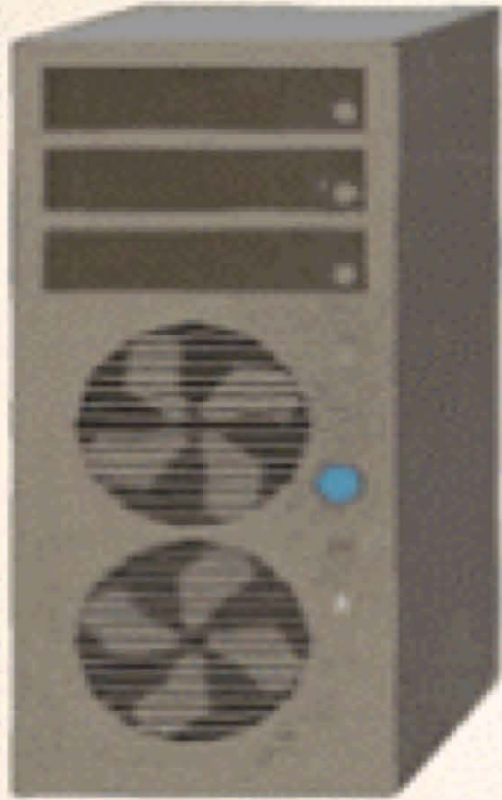
Big Data and IoT





Autonomous Or Remote operations

Digital Ship



Digital Ship



Cyber threats

Digital Ship

Our Panel

- Anne H. Steffensen, *Director-Gen,*
Danish Shipping
- Jenny Braat, *Managing Director,*
Danish Maritime
- Pia Berglund, *Executive Vice President,*
Swedish Shipowners' Association
- Tiina Tuurnala, *Managing Director,*
Finnish Shipowners' Association

Digital Ship

Q – Which of the major trends in technology development do you think will have the greatest near term impact on the way shipping companies go about their daily business – and why?

Our Panel

- Anne H. Steffensen, *Director-Gen,*
Danish Shipping
- Jenny Braat, *Managing Director,*
Danish Maritime
- Pia Berglund, *Executive Vice President,*
Swedish Shipowners' Association
- Tiina Tuurnala, *Managing Director,*
Finnish Shipowners' Association

Digital Ship

Q – Where would you recommend industry stakeholders prioritise in their own tech investments in the next five years to best prepare themselves for our maritime future?

Our Panel

- Anne H. Steffensen, *Director-Gen,*
Danish Shipping
- Jenny Braat, *Managing Director,*
Danish Maritime
- Pia Berglund, *Executive Vice President,*
Swedish Shipowners' Association
- Tiina Tuurnala, *Managing Director,*
Finnish Shipowners' Association

Digital Ship

Q – How do we ensure that the human element is prepared and integrated as processes become more automated, but also more complex, at sea and on shore?

Our Panel

- Anne H. Steffensen, *Director-Gen,*
Danish Shipping
- Jenny Braat, *Managing Director,*
Danish Maritime
- Pia Berglund, *Executive Vice President,*
Swedish Shipowners' Association
- Tiina Tuurnala, *Managing Director,*
Finnish Shipowners' Association

Digital Ship

Q – The pace of technology development will always outstrip the ability of regulators to legislate for its impact - how do we balance innovation with harmonised regulation?

Our Panel

- Anne H. Steffensen, *Director-Gen,*
Danish Shipping
- Jenny Braat, *Managing Director,*
Danish Maritime
- Pia Berglund, *Executive Vice President,*
Swedish Shipowners' Association
- Tiina Tuurnala, *Managing Director,*
Finnish Shipowners' Association

Digital Ship

Q – Do you think that maritime will benefit more from technological development backed by public authority support and funding, or from private innovation in the near term?